

Datasheet for ABIN631805
anti-C10ORF96 antibody (Middle Region)



[Go to Product page](#)

1 Image

Overview

Quantity:	100 µL
Target:	C10ORF96 (C10orf96)
Binding Specificity:	Middle Region
Reactivity:	Human
Host:	Rabbit
Clonality:	Polyclonal
Conjugate:	This C10ORF96 antibody is un-conjugated
Application:	Western Blotting (WB)

Product Details

Immunogen:	C10 ORF96 antibody was raised using the middle region of C10 rf96 corresponding to a region with amino acids QANMLKSEMKSMEHDSSQLNELQKQKSELIQELFTLQRKLVFEDEENES
Specificity:	C10 ORF96 antibody was raised against the middle region of C10 rf96
Purification:	Affinity purified

Target Details

Target:	C10ORF96 (C10orf96)
Alternative Name:	C10ORF96 (C10orf96 Products)
Background:	The function of Chromosome 10 ORF protein is not widely studied, and is yet to be elucidated fully.

Target Details

Molecular Weight: 31 kDa (MW of target protein)

Application Details

Application Notes: WB: 1 µg/mL
Optimal conditions should be determined by the investigator.

Comment: C10ORF96 Blocking Peptide, catalog no. 33R-7472, is also available for use as a blocking control in assays to test for specificity of this C10ORF96 antibody

Restrictions: For Research Use only

Handling

Format: Lyophilized

Reconstitution: Lyophilized powder. Add distilled water for a 1 mg/mL concentration of C10 RF96 antibody in PBS

Concentration: Lot specific

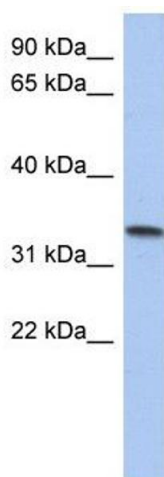
Buffer: PBS

Handling Advice: Avoid repeated freeze/thaw cycles.
Dilute only prior to immediate use.

Storage: 4 °C/-20 °C

Storage Comment: Store at 2-8 °C for short periods. For longer periods of storage, store at -20 °C.

Images



Western Blotting

Image 1. C10ORF96 antibody used at 1 ug/ml to detect target protein.