

Datasheet for ABIN631810
anti-EIF4ENIF1 antibody (N-Term)



[Go to Product page](#)

1 Image

Overview

Quantity:	100 µL
Target:	EIF4ENIF1
Binding Specificity:	N-Term
Reactivity:	Human
Host:	Rabbit
Clonality:	Polyclonal
Conjugate:	This EIF4ENIF1 antibody is un-conjugated
Application:	Western Blotting (WB)

Product Details

Immunogen:	EIF4 ENIF1 antibody was raised using the N terminal of EIF4 NIF1 corresponding to a region with amino acids DSDGLRLLGGRRIGSGRIISARTFEKDHRLSDKDLRDLRDRDRERDFKDK
Specificity:	EIF4 ENIF1 antibody was raised against the N terminal of EIF4 NIF1
Purification:	Affinity purified

Target Details

Target:	EIF4ENIF1
Alternative Name:	EIF4ENIF1 (EIF4ENIF1 Products)
Background:	The protein encoded by this gene is a nucleocytoplasmic shuttle protein for the translation initiation factor eIF4E. This shuttle protein interacts with the importin alpha-beta complex to mediate nuclear import of eIF4E. It is predominantly cytoplasmic, its own nuclear import is

Target Details

regulated by a nuclear localization signal and nuclear export signals. Multiple transcript variants encoding different isoforms have been found for this gene.

Molecular Weight: 108 kDa (MW of target protein)

Application Details

Application Notes: WB: 1 µg/mL
Optimal conditions should be determined by the investigator.

Comment: EIF4ENIF1 Blocking Peptide, catalog no. 33R-2158, is also available for use as a blocking control in assays to test for specificity of this EIF4ENIF1 antibody

Restrictions: For Research Use only

Handling

Format: Lyophilized

Reconstitution: Lyophilized powder. Add distilled water for a 1 mg/mL concentration of EIF4ENIF1 antibody in PBS

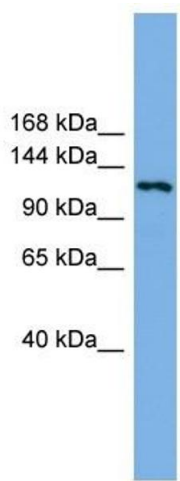
Concentration: Lot specific

Buffer: PBS

Handling Advice: Avoid repeated freeze/thaw cycles.
Dilute only prior to immediate use.

Storage: 4 °C/-20 °C

Storage Comment: Store at 2-8 °C for short periods. For longer periods of storage, store at -20 °C.



Western Blotting

Image 1. EIF4ENIF1 antibody used at 1 ug/ml to detect target protein.