

Datasheet for ABIN631814 **anti-ERCC6L antibody (N-Term)**



[Go to Product page](#)

1 Image

Overview

Quantity:	100 µL
Target:	ERCC6L
Binding Specificity:	N-Term
Reactivity:	Human
Host:	Rabbit
Clonality:	Polyclonal
Conjugate:	This ERCC6L antibody is un-conjugated
Application:	Western Blotting (WB)

Product Details

Immunogen:	ERCC6 L antibody was raised using the N terminal Of Ercc6 corresponding to a region with amino acids GDLEEFKLFNLAKDIFPNEKVLRSRIQKIQEALAEQGDDEFTDVCNS
Specificity:	ERCC6 L antibody was raised against the N terminal Of Ercc6
Purification:	Affinity purified

Target Details

Target:	ERCC6L
Alternative Name:	ERCC6L (ERCC6L Products)
Background:	ERCC6L is a DNA helicase that acts as an essential component of the spindle assembly checkpoint. ERCC6L contributes to the mitotic checkpoint by recruiting MAD2 to kinetochores and monitoring tension on centromeric chromatin. ERCC6L acts as a tension sensor that

Target Details

associates with catenated DNA which is stretched under tension until it is resolved during anaphase.

Molecular Weight: 141 kDa (MW of target protein)

Application Details

Application Notes: WB: 1 µg/mL
Optimal conditions should be determined by the investigator.

Comment: ERCC6L Blocking Peptide, catalog no. 33R-3202, is also available for use as a blocking control in assays to test for specificity of this ERCC6L antibody

Restrictions: For Research Use only

Handling

Format: Lyophilized

Reconstitution: Lyophilized powder. Add distilled water for a 1 mg/mL concentration of ERCC0 antibody in PBS

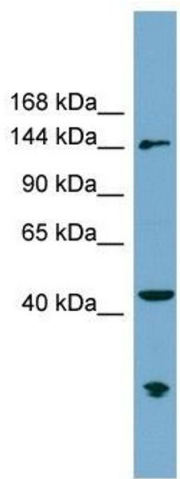
Concentration: Lot specific

Buffer: PBS

Handling Advice: Avoid repeated freeze/thaw cycles.
Dilute only prior to immediate use.

Storage: 4 °C/-20 °C

Storage Comment: Store at 2-8 °C for short periods. For longer periods of storage, store at -20 °C.



Western Blotting

Image 1. ERCC6L antibody used at 1 ug/ml to detect target protein.