

Datasheet for ABIN631828
anti-Sec23 Homolog B antibody



[Go to Product page](#)

1 Image

Overview

Quantity:	100 µL
Target:	Sec23 Homolog B (SEC23B)
Reactivity:	Human, Mouse, Rat
Host:	Rabbit
Clonality:	Polyclonal
Conjugate:	This Sec23 Homolog B antibody is un-conjugated
Application:	Western Blotting (WB)

Product Details

Immunogen:	SEC23 B antibody was raised using a synthetic peptide corresponding to a region with amino acids SFSLYPQFMFHLRRSPFLQVFNNSPDESSYYRHHFARQDLTQSLIMIQPI
Purification:	Affinity purified

Target Details

Target:	Sec23 Homolog B (SEC23B)
Alternative Name:	SEC23B (SEC23B Products)
Background:	SEC23B is a member of the SEC23 subfamily of the SEC23/SEC24 family, which is involved in vesicle trafficking. SEC23B has similarity to yeast Sec23p component of COPII. COPII is the coat protein complex responsible for vesicle budding from the ER. The function SEC23B has been implicated in cargo selection and concentration.
Molecular Weight:	86 kDa (MW of target protein)

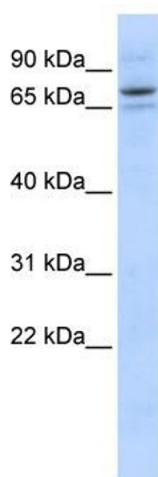
Application Details

Application Notes:	WB: 1 µg/mL Optimal conditions should be determined by the investigator.
Comment:	SEC23B Blocking Peptide, catalog no. 33R-8439, is also available for use as a blocking control in assays to test for specificity of this SEC23B antibody
Restrictions:	For Research Use only

Handling

Format:	Lyophilized
Reconstitution:	Lyophilized powder. Add distilled water for a 1 mg/mL concentration of SEC20 antibody in PBS
Concentration:	Lot specific
Buffer:	PBS
Handling Advice:	Avoid repeated freeze/thaw cycles.
Storage:	4 °C/-20 °C
Storage Comment:	Store at 2-8 °C for short periods. For longer periods of storage, store at -20 °C.

Images



Western Blotting

Image 1. SEC23B antibody used at 1 ug/ml to detect target protein.