

Datasheet for ABIN631830
anti-TMPRSS3 antibody (N-Term)



[Go to Product page](#)

1 Image

Overview

Quantity:	100 µL
Target:	TMPRSS3
Binding Specificity:	N-Term
Reactivity:	Human
Host:	Rabbit
Clonality:	Polyclonal
Conjugate:	This TMPRSS3 antibody is un-conjugated
Application:	Western Blotting (WB)

Product Details

Immunogen:	TMPRSS3 antibody was raised using the N terminal of TMPRSS3 corresponding to a region with amino acids MGENDPPAVEAPFSFRSLFGLDDLKISPVAPDADAVAAQILSLLPLKFFP
Specificity:	TMPRSS3 antibody was raised against the N terminal of TMPRSS3
Purification:	Affinity purified

Target Details

Target:	TMPRSS3
Alternative Name:	TMPRSS3 (TMPRSS3 Products)
Background:	This gene encodes a protein that belongs to the serine protease family. The encoded protein contains a serine protease domain, a transmembrane domain, a LDL receptor-like domain, and a scavenger receptor cysteine-rich domain. Serine proteases are known to be involved in a

Target Details

variety of biological processes, whose malfunction often leads to human diseases and disorders. This gene was identified by its association with both congenital and childhood onset autosomal recessive deafness.

Molecular Weight: 37 kDa (MW of target protein)

Pathways: [Sensory Perception of Sound](#)

Application Details

Application Notes: WB: 1 µg/mL
Optimal conditions should be determined by the investigator.

Comment: Tmprss3 Blocking Peptide, catalog no. 33R-6022, is also available for use as a blocking control in assays to test for specificity of this Tmprss3 antibody

Restrictions: For Research Use only

Handling

Format: Lyophilized

Reconstitution: Lyophilized powder. Add distilled water for a 1 mg/mL concentration of Tmprss3 antibody in PBS

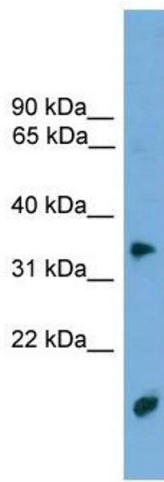
Concentration: Lot specific

Buffer: PBS

Handling Advice: Avoid repeated freeze/thaw cycles.
Dilute only prior to immediate use.

Storage: 4 °C/-20 °C

Storage Comment: Store at 2-8 °C for short periods. For longer periods of storage, store at -20 °C.



Western Blotting

Image 1. Tmprss3 antibody used at 1 ug/ml to detect target protein.