

Datasheet for ABIN631837 **anti-DCXR antibody (Middle Region)**



[Go to Product page](#)

2 Images

Overview

Quantity:	100 µL
Target:	DCXR
Binding Specificity:	Middle Region
Reactivity:	Human, Mouse, Rat
Host:	Rabbit
Clonality:	Polyclonal
Conjugate:	This DCXR antibody is un-conjugated
Application:	Western Blotting (WB), Immunohistochemistry (IHC)

Product Details

Immunogen:	DCXR antibody was raised using the middle region of DCXR corresponding to a region with amino acids STKGALDMLTKVMALELGPHKIRVNAVNPVVM TSMGQATWSDPHKAKTM
Specificity:	DCXR antibody was raised against the middle region of DCXR
Purification:	Affinity purified

Target Details

Target:	DCXR
Alternative Name:	DCXR (DCXR Products)
Background:	DCXR is an enzyme that has both diacetyl reductase and L-xylulose reductase activities. DCXR is an enzyme that has both diacetyl reductase (EC 1.1.1.5) and L-xylulose reductase (EC 1.1.1.10) activities.

Target Details

Molecular Weight: 27 kDa (MW of target protein)

Pathways: [Glycosaminoglycan Metabolic Process](#), [Monocarboxylic Acid Catabolic Process](#)

Application Details

Application Notes: WB: 0.25 µg/mL, IHC: 4-8 µg/mL
Optimal conditions should be determined by the investigator.

Comment: DCXR Blocking Peptide, catalog no. 33R-8869, is also available for use as a blocking control in assays to test for specificity of this DCXR antibody

Restrictions: For Research Use only

Handling

Format: Lyophilized

Reconstitution: Lyophilized powder. Add distilled water for a 1 mg/mL concentration of DCXR antibody in PBS

Concentration: Lot specific

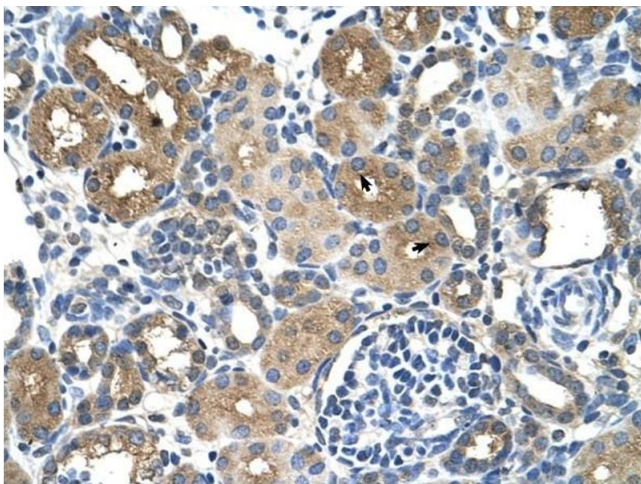
Buffer: PBS

Handling Advice: Avoid repeated freeze/thaw cycles.
Dilute only prior to immediate use.

Storage: 4 °C/-20 °C

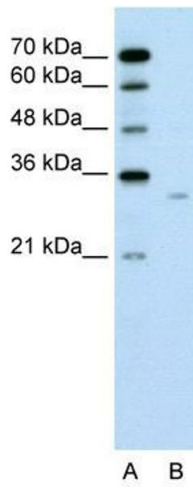
Storage Comment: Store at 2-8 °C for short periods. For longer periods of storage, store at -20 °C.

Images



Immunohistochemistry

Image 1. DCXR antibody was used for immunohistochemistry at a concentration of 4-8 µg/ml to stain Epithelial cells of renal tubule (arrows) in Human Kidney. Magnification is at 400X



Western Blotting

Image 2. DCXR antibody used at 0.25 ug/ml to detect target protein.