

Datasheet for ABIN631839

**anti-ENKD1 antibody (C-Term)**[Go to Product page](#)**1** Image

## Overview

Quantity:	100 µL
Target:	ENKD1
Binding Specificity:	C-Term
Reactivity:	Human
Host:	Rabbit
Clonality:	Polyclonal
Conjugate:	This ENKD1 antibody is un-conjugated
Application:	Western Blotting (WB)

## Product Details

Immunogen:	C16 ORF48 antibody was raised using the C terminal Of C16 rf48 corresponding to a region with amino acids DLWRREAEARKQSQPDAMP PGHTRMPENQRLET LTKLLQSQSQLLRELV
Specificity:	C16 ORF48 antibody was raised against the C terminal Of C16 rf48
Purification:	Affinity purified

## Target Details

Target:	ENKD1
Alternative Name:	C16ORF48 ( <a href="#">ENKD1 Products</a> )
Background:	The function of C16orf48 protein has not been widely studied, and is yet to be fully elucidated.
Molecular Weight:	39 kDa (MW of target protein)

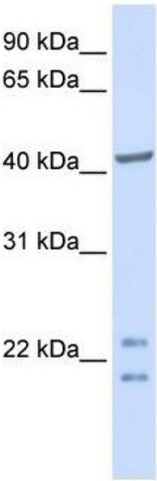
## Application Details

Application Notes:	WB: 1 µg/mL Optimal conditions should be determined by the investigator.
Comment:	C16ORF48 Blocking Peptide, catalog no. 33R-2073, is also available for use as a blocking control in assays to test for specificity of this C16ORF48 antibody
Restrictions:	For Research Use only

## Handling

Format:	Lyophilized
Reconstitution:	Lyophilized powder. Add distilled water for a 1 mg/mL concentration of C10 RF48 antibody in PBS
Concentration:	Lot specific
Buffer:	PBS
Handling Advice:	Avoid repeated freeze/thaw cycles. Dilute only prior to immediate use.
Storage:	4 °C/-20 °C
Storage Comment:	Store at 2-8 °C for short periods. For longer periods of storage, store at -20 °C.

## Images



### Western Blotting

**Image 1.** C16ORF48 antibody used at 1 ug/ml to detect target protein.