

Datasheet for ABIN631841

anti-Phosphoglucomutase 3 antibody (Middle Region)[Go to Product page](#)**1** Image

Overview

Quantity:	100 µL
Target:	Phosphoglucomutase 3 (PGM3)
Binding Specificity:	Middle Region
Reactivity:	Human, Mouse, Rat
Host:	Rabbit
Clonality:	Polyclonal
Conjugate:	This Phosphoglucomutase 3 antibody is un-conjugated
Application:	Western Blotting (WB)

Product Details

Immunogen:	PGM3 antibody was raised using the middle region of PGM3 corresponding to a region with amino acids GVVQTAYANGSSTRYLEEVMKVPVYCTKTGVKHLHHKAQEFDIGVYFEAN
Specificity:	PGM3 antibody was raised against the middle region of PGM3
Purification:	Affinity purified

Target Details

Target:	Phosphoglucomutase 3 (PGM3)
Alternative Name:	PGM3 (PGM3 Products)
Background:	PGM3 interconverts GlcNAc-6-P and GlcNAc-1-P.
Molecular Weight:	60 kDa (MW of target protein)

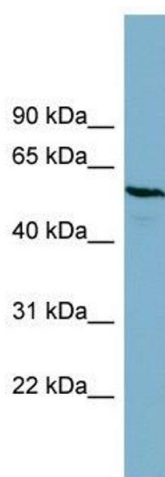
Application Details

Application Notes:	WB: 1 µg/mL Optimal conditions should be determined by the investigator.
Comment:	PGM3 Blocking Peptide, catalog no. 33R-3660, is also available for use as a blocking control in assays to test for specificity of this PGM3 antibody
Restrictions:	For Research Use only

Handling

Format:	Lyophilized
Reconstitution:	Lyophilized powder. Add distilled water for a 1 mg/mL concentration of PGM3 antibody in PBS
Concentration:	Lot specific
Buffer:	PBS
Handling Advice:	Avoid repeated freeze/thaw cycles. Dilute only prior to immediate use.
Storage:	4 °C/-20 °C
Storage Comment:	Store at 2-8 °C for short periods. For longer periods of storage, store at -20 °C.

Images



Western Blotting

Image 1. PGM3 antibody used at 1 ug/ml to detect target protein.