

Datasheet for ABIN631844
anti-GNPDA1 antibody (C-Term)



[Go to Product page](#)

1 Image

Overview

Quantity:	100 µL
Target:	GNPDA1
Binding Specificity:	C-Term
Reactivity:	Mouse, Human, Rat, C. elegans
Host:	Rabbit
Clonality:	Polyclonal
Conjugate:	This GNPDA1 antibody is un-conjugated
Application:	Western Blotting (WB)

Product Details

Immunogen:	GNPDA1 antibody was raised using the C terminal of GNPDA1 corresponding to a region with amino acids EGVNHMWTVSAFQQHPRTVFVCDDEATLELKVKTVKYFKGLMLVHNKLVD
Specificity:	GNPDA1 antibody was raised against the C terminal of GNPDA1
Purification:	Affinity purified

Target Details

Target:	GNPDA1
Alternative Name:	GNPDA1 (GNPDA1 Products)
Background:	GNPDA1 belongs to the glucosamine/galactosamine-6-phosphate isomerase family. It seems to trigger calcium oscillations in mammalian eggs. These oscillations serve as the essential trigger for egg activation and early development of the embryo.

Target Details

Molecular Weight: 33 kDa (MW of target protein)

Application Details

Application Notes: WB: 1 µg/mL
Optimal conditions should be determined by the investigator.

Comment: GNPDA1 Blocking Peptide, catalog no. 33R-2449, is also available for use as a blocking control in assays to test for specificity of this GNPDA1 antibody

Restrictions: For Research Use only

Handling

Format: Lyophilized

Reconstitution: Lyophilized powder. Add distilled water for a 1 mg/mL concentration of GNPDA1 antibody in PBS

Concentration: Lot specific

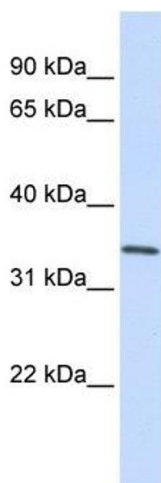
Buffer: PBS

Handling Advice: Avoid repeated freeze/thaw cycles.
Dilute only prior to immediate use.

Storage: 4 °C/-20 °C

Storage Comment: Store at 2-8 °C for short periods. For longer periods of storage, store at -20 °C.

Images



Western Blotting

Image 1. GNPDA1 antibody used at 1 ug/ml to detect target protein.