

Datasheet for ABIN631868
anti-C21ORF45 antibody (N-Term)



[Go to Product page](#)

1 Image

Overview

Quantity:	100 µL
Target:	C21ORF45 (MIS18A)
Binding Specificity:	N-Term
Reactivity:	Human
Host:	Rabbit
Clonality:	Polyclonal
Conjugate:	This C21ORF45 antibody is un-conjugated
Application:	Western Blotting (WB)

Product Details

Immunogen:	C21 ORF45 antibody was raised using the N terminal Of C21 rf45 corresponding to a region with amino acids MAGVRSRLRCSRGCAGGCEGDKGKCS DSSLLGKR LSE DSSRHQLLQKWAS
Specificity:	C21 ORF45 antibody was raised against the N terminal Of C21 rf45
Purification:	Affinity purified

Target Details

Target:	C21ORF45 (MIS18A)
Alternative Name:	C21ORF45 (MIS18A Products)
Background:	C21ORF45 is required for recruitment of CENPA to centromeres and normal chromosome segregation during mitosis.

Target Details

Molecular Weight: 26 kDa (MW of target protein)

Application Details

Application Notes: WB: 1 µg/mL
Optimal conditions should be determined by the investigator.

Comment: C21ORF45 Blocking Peptide, catalog no. 33R-5672, is also available for use as a blocking control in assays to test for specificity of this C21ORF45 antibody

Restrictions: For Research Use only

Handling

Format: Lyophilized

Reconstitution: Lyophilized powder. Add distilled water for a 1 mg/mL concentration of C20 RF45 antibody in PBS

Concentration: Lot specific

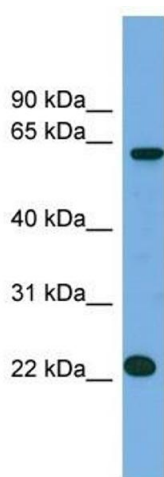
Buffer: PBS

Handling Advice: Avoid repeated freeze/thaw cycles.
Dilute only prior to immediate use.

Storage: 4 °C/-20 °C

Storage Comment: Store at 2-8 °C for short periods. For longer periods of storage, store at -20 °C.

Images



Western Blotting

Image 1. C21ORF45 antibody used at 1 ug/ml to detect target protein.