

Datasheet for ABIN631899 **anti-ERCC5 antibody (N-Term)**



[Go to Product page](#)

1 Image

Overview

Quantity:	100 µL
Target:	ERCC5
Binding Specificity:	N-Term
Reactivity:	Human, Mouse, Rat
Host:	Rabbit
Clonality:	Polyclonal
Conjugate:	This ERCC5 antibody is un-conjugated
Application:	Western Blotting (WB)

Product Details

Immunogen:	ERCC5 antibody was raised using the N terminal of ERCC5 corresponding to a region with amino acids NPQAIDIESEDFSSLPPEVKHEILTDMKEFTKRRRTLFEAMPEESDDFSQ
Specificity:	ERCC5 antibody was raised against the N terminal of ERCC5
Purification:	Affinity purified

Target Details

Target:	ERCC5
Alternative Name:	ERCC5 (ERCC5 Products)
Background:	Excision repair cross-complementing rodent repair deficiency, complementation group 5 (xeroderma pigmentosum, complementation group G) is involved in excision repair of UV-induced DNA damage. Mutations cause Cockayne syndrome, which is characterized by severe

Target Details

growth defects, mental retardation, and cachexia. Excision repair cross-complementing rodent repair deficiency, complementation group 5 (xeroderma pigmentosum, complementation group G) is involved in excision repair of UV-induced DNA damage.

Molecular Weight: 133 kDa (MW of target protein)

Pathways: [DNA Damage Repair](#)

Application Details

Application Notes: WB: 1 µg/mL
Optimal conditions should be determined by the investigator.

Comment: ERCC5 Blocking Peptide, catalog no. 33R-6828, is also available for use as a blocking control in assays to test for specificity of this ERCC5 antibody

Restrictions: For Research Use only

Handling

Format: Lyophilized

Reconstitution: Lyophilized powder. Add distilled water for a 1 mg/mL concentration of ERCC5 antibody in PBS

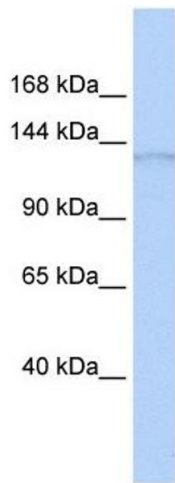
Concentration: Lot specific

Buffer: PBS

Handling Advice: Avoid repeated freeze/thaw cycles.
Dilute only prior to immediate use.

Storage: 4 °C/-20 °C

Storage Comment: Store at 2-8 °C for short periods. For longer periods of storage, store at -20 °C.



Western Blotting

Image 1. ERCC5 antibody used at 1 ug/ml to detect target protein.