

Datasheet for ABIN631908
anti-MYL3/CMLC1 antibody (N-Term)



[Go to Product page](#)

1 Image

Overview

Quantity:	100 µL
Target:	MYL3/CMLC1 (MYL3)
Binding Specificity:	N-Term
Reactivity:	Human, Mouse, Rat
Host:	Rabbit
Clonality:	Polyclonal
Conjugate:	This MYL3/CMLC1 antibody is un-conjugated
Application:	Western Blotting (WB)

Product Details

Immunogen:	MYL3 antibody was raised using the N terminal of MYL3 corresponding to a region with amino acids VEFDASKIKIEFTPEQIEEFKEAFMLFDRTPKCEMKITYGQC GDVLRALG
Specificity:	MYL3 antibody was raised against the N terminal of MYL3
Purification:	Affinity purified

Target Details

Target:	MYL3/CMLC1 (MYL3)
Alternative Name:	MYL3 (MYL3 Products)
Background:	MYL3 encodes myosin light chain 3, an alkali light chain also referred to in the literature as both the ventricular isoform and the slow skeletal muscle isoform.

Target Details

Molecular Weight: 22 kDa (MW of target protein)

Application Details

Application Notes: WB: 1 µg/mL
Optimal conditions should be determined by the investigator.

Comment: MYL3 Blocking Peptide, catalog no. 33R-9494, is also available for use as a blocking control in assays to test for specificity of this MYL3 antibody

Restrictions: For Research Use only

Handling

Format: Lyophilized

Reconstitution: Lyophilized powder. Add distilled water for a 1 mg/mL concentration of MYL3 antibody in PBS

Concentration: Lot specific

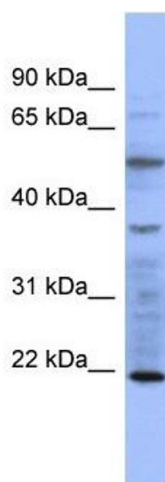
Buffer: PBS

Handling Advice: Avoid repeated freeze/thaw cycles.
Dilute only prior to immediate use.

Storage: 4 °C/-20 °C

Storage Comment: Store at 2-8 °C for short periods. For longer periods of storage, store at -20 °C.

Images



Western Blotting

Image 1. MYL3 antibody used at 1 ug/ml to detect target protein.