

## Datasheet for ABIN631911 **anti-VPS37C antibody**



[Go to Product page](#)

### 1 Image

#### Overview

Quantity:	100 µL
Target:	VPS37C
Reactivity:	Human, Mouse, Rat
Host:	Rabbit
Clonality:	Polyclonal
Conjugate:	This VPS37C antibody is un-conjugated
Application:	Western Blotting (WB)

#### Product Details

Immunogen:	VPS37 C antibody was raised using a synthetic peptide corresponding to a region with amino acids LQLEREMALATNRS LAERNLEFQGP LEISRSNLS DRYQELRKLVERCQEQ
Purification:	Affinity purified

#### Target Details

Target:	VPS37C
Alternative Name:	VPS37C ( <a href="#">VPS37C Products</a> )
Background:	VPS37C is a subunit of ESCRT-I (endosomal sorting complex required for transport I), a complex in the class E vacuolar protein sorting (VPS) pathway required for sorting ubiquitinated transmembrane proteins into internal vesicles of multivesicular bodies.
Molecular Weight:	39 kDa (MW of target protein)

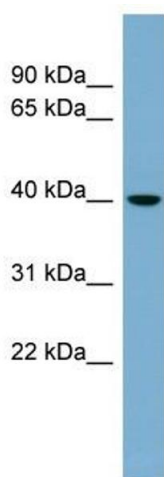
## Application Details

Application Notes:	WB: 1 µg/mL Optimal conditions should be determined by the investigator.
Comment:	VPS37C Blocking Peptide, catalog no. 33R-5323, is also available for use as a blocking control in assays to test for specificity of this VPS37C antibody
Restrictions:	For Research Use only

## Handling

Format:	Lyophilized
Reconstitution:	Lyophilized powder. Add distilled water for a 1 mg/mL concentration of VPS30 antibody in PBS
Concentration:	Lot specific
Buffer:	PBS
Handling Advice:	Avoid repeated freeze/thaw cycles.
Storage:	4 °C/-20 °C
Storage Comment:	Store at 2-8 °C for short periods. For longer periods of storage, store at -20 °C.

## Images



### Western Blotting

**Image 1.** VPS37C antibody used at 1 ug/ml to detect target protein.