

Datasheet for ABIN631923

**anti-C16orf78 antibody (Middle Region)**[Go to Product page](#)**1** Image

## Overview

|                      |   |
|----------------------|---|
| Quantity:            | 100 µL                                  |
| Target:              | C16orf78                                |
| Binding Specificity: | Middle Region                           |
| Reactivity:          | Human                                   |
| Host:                | Rabbit                                  |
| Clonality:           | Polyclonal                              |
| Conjugate:           | This C16orf78 antibody is un-conjugated |
| Application:         | Western Blotting (WB)                   |

## Product Details

|               |   |
|---------------|---|
| Immunogen:    | C16 ORF78 antibody was raised using the middle region of C16 rf78 corresponding to a region with amino acids GVEQKGKHLMSVPGSYIKDGPKKSDTDIKDAVDPESTQRPNPFRRQSIVL |
| Specificity:  | C16 ORF78 antibody was raised against the middle region of C16 rf78   |
| Purification: | Affinity purified   |

## Target Details

|                   |  |
|-------------------|--|
| Target:           | C16orf78   |
| Alternative Name: | C16ORF78 ( <a href="#">C16orf78 Products</a> )   |
| Background:       | The function of C16orf78 protein has not been widely studied, and is yet to be fully elucidated. |
| Molecular Weight: | 34 kDa (MW of target protein)  |

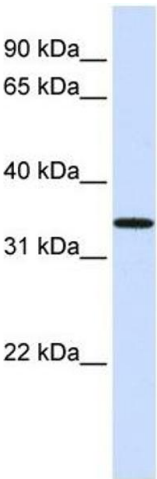
Application Details

|                    |  |
|--------------------|--|
| Application Notes: | WB: 1 µg/mL<br>Optimal conditions should be determined by the investigator.  |
| Comment:           | C16ORF78 Blocking Peptide, catalog no. 33R-3634, is also available for use as a blocking control in assays to test for specificity of this C16ORF78 antibody |
| Restrictions:      | For Research Use only  |

Handling

|                  |   |
|------------------|---|
| Format:          | Lyophilized   |
| Reconstitution:  | Lyophilized powder. Add distilled water for a 1 mg/mL concentration of C10 RF78 antibody in PBS |
| Concentration:   | Lot specific  |
| Buffer:          | PBS   |
| Handling Advice: | Avoid repeated freeze/thaw cycles.<br>Dilute only prior to immediate use.                       |
| Storage:         | 4 °C/-20 °C   |
| Storage Comment: | Store at 2-8 °C for short periods. For longer periods of storage, store at -20 °C.              |

Images



**Western Blotting**

**Image 1.** C16ORF78 antibody used at 1 ug/ml to detect target protein.