

Datasheet for ABIN631927  
**anti-ENOSF1 antibody (N-Term)**



[Go to Product page](#)

1 Image

## Overview

Quantity:	100 µL
Target:	ENOSF1
Binding Specificity:	N-Term
Reactivity:	Human
Host:	Rabbit
Clonality:	Polyclonal
Conjugate:	This ENOSF1 antibody is un-conjugated
Application:	Western Blotting (WB)

## Product Details

Immunogen:	ENOSF1 antibody was raised using the N terminal of ENOSF1 corresponding to a region with amino acids MVRGRISRLSVRDVRFPTSLGGHGADAMHTDPDYSAAYVVIETDAEDGIK
Specificity:	ENOSF1 antibody was raised against the N terminal of ENOSF1
Purification:	Affinity purified

## Target Details

Target:	ENOSF1
Alternative Name:	ENOSF1 ( <a href="#">ENOSF1 Products</a> )
Background:	This gene was originally identified as a naturally occurring antisense transcript to the human thymidylate synthase gene. Alternate splice variants have been described.

## Target Details

---

Molecular Weight: 50 kDa (MW of target protein)

## Application Details

---

Application Notes: WB: 1 µg/mL  
Optimal conditions should be determined by the investigator.

Comment: ENOSF1 Blocking Peptide, catalog no. 33R-6601, is also available for use as a blocking control in assays to test for specificity of this ENOSF1 antibody

Restrictions: For Research Use only

## Handling

---

Format: Lyophilized

Reconstitution: Lyophilized powder. Add distilled water for a 1 mg/mL concentration of ENOSF1 antibody in PBS

Concentration: Lot specific

Buffer: PBS

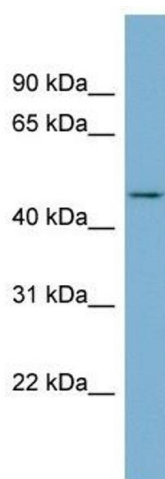
Handling Advice: Avoid repeated freeze/thaw cycles.  
Dilute only prior to immediate use.

Storage: 4 °C/-20 °C

Storage Comment: Store at 2-8 °C for short periods. For longer periods of storage, store at -20 °C.

## Images

---



### Western Blotting

**Image 1.** ENOSF1 antibody used at 1 ug/ml to detect target protein.