

## Datasheet for ABIN631930 **anti-LRRC50 antibody (N-Term)**



[Go to Product page](#)

### 1 Image

#### Overview

Quantity:	100 µL
Target:	LRRC50
Binding Specificity:	N-Term
Reactivity:	Human, Rat, Mouse
Host:	Rabbit
Clonality:	Polyclonal
Conjugate:	This LRRC50 antibody is un-conjugated
Application:	Western Blotting (WB)

#### Product Details

Immunogen:	LRRC50 antibody was raised using the N terminal of LRRC50 corresponding to a region with amino acids LNDTLYLHFKGFDRIENLEEYTGRLCLWLQSNGIQKIQKLENLEAQTELRLCF
Specificity:	LRRC50 antibody was raised against the N terminal of LRRC50
Purification:	Affinity purified

#### Target Details

Target:	LRRC50
Alternative Name:	LRRC50 ( <a href="#">LRRC50 Products</a> )
Background:	LRRC50 contains 6 LRR (leucine-rich) repeats. It is proposed that LRRC50 to be a novel candidate gene for human cystic kidney disease, involved in regulation of microtubule-based cilia and actin-based brush border microvilli.

## Target Details

---

Molecular Weight: 80 kDa (MW of target protein)

## Application Details

---

Application Notes: WB: 1 µg/mL  
Optimal conditions should be determined by the investigator.

Comment: LRRC50 Blocking Peptide, catalog no. 33R-5219, is also available for use as a blocking control in assays to test for specificity of this LRRC50 antibody

Restrictions: For Research Use only

## Handling

---

Format: Lyophilized

Reconstitution: Lyophilized powder. Add distilled water for a 1 mg/mL concentration of LRRC50 antibody in PBS

Concentration: Lot specific

Buffer: PBS

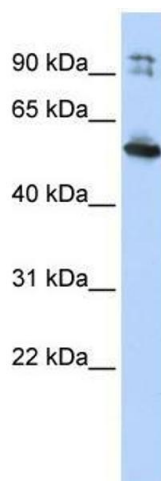
Handling Advice: Avoid repeated freeze/thaw cycles.  
Dilute only prior to immediate use.

Storage: 4 °C/-20 °C

Storage Comment: Store at 2-8 °C for short periods. For longer periods of storage, store at -20 °C.

## Images

---



**Image 1.**