

Datasheet for ABIN631958 **anti-WDR1 antibody (N-Term)**



[Go to Product page](#)

1 Image

Overview

Quantity:	100 µL
Target:	WDR1
Binding Specificity:	N-Term
Reactivity:	Human
Host:	Rabbit
Clonality:	Polyclonal
Conjugate:	This WDR1 antibody is un-conjugated
Application:	Western Blotting (WB)

Product Details

Immunogen:	WDR1 antibody was raised using the N terminal of WDR1 corresponding to a region with amino acids DIAWTEDSKRIAVVGEGREKFGAVFLWDSGSSVGEITGHNKVINSVDIKQ
Specificity:	WDR1 antibody was raised against the N terminal of WDR1
Purification:	Affinity purified

Target Details

Target:	WDR1
Alternative Name:	WDR1 (WDR1 Products)
Background:	WDR1 is a protein containing 9 WD repeats. WD repeats are approximately 30- to 40-amino acid domains containing several conserved residues, mostly including a trp-asp at the C-terminal end. WD domains are involved in protein-protein interactions. WDR1 may help induce the

Target Details

disassembly of actin filaments.

Molecular Weight: 66 kDa (MW of target protein)

Pathways: [Sensory Perception of Sound](#)

Application Details

Application Notes: WB: 1 µg/mL
Optimal conditions should be determined by the investigator.

Comment: WDR1 Blocking Peptide, catalog no. 33R-1988, is also available for use as a blocking control in assays to test for specificity of this WDR1 antibody

Restrictions: For Research Use only

Handling

Format: Lyophilized

Reconstitution: Lyophilized powder. Add distilled water for a 1 mg/mL concentration of WDR1 antibody in PBS

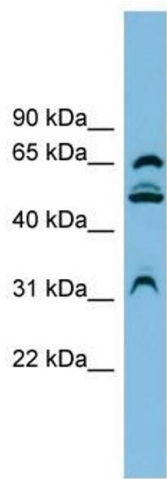
Concentration: Lot specific

Buffer: PBS

Handling Advice: Avoid repeated freeze/thaw cycles.
Dilute only prior to immediate use.

Storage: 4 °C/-20 °C

Storage Comment: Store at 2-8 °C for short periods. For longer periods of storage, store at -20 °C.



Western Blotting

Image 1. WDR1 antibody used at 1 ug/ml to detect target protein.