

Datasheet for ABIN631982 **anti-MTHFD2L antibody**



[Go to Product page](#)

1 Image

Overview

Quantity:	100 µL
Target:	MTHFD2L
Reactivity:	Human, Mouse, Rat
Host:	Rabbit
Clonality:	Polyclonal
Conjugate:	This MTHFD2L antibody is un-conjugated
Application:	Western Blotting (WB)

Product Details

Immunogen:	MTHFD2 L antibody was raised using a synthetic peptide corresponding to a region with amino acids TGIQTFGKNVVAGRSKNVGMPIAMLLHTDGEHERPGGDATVTIAHRYTP
Purification:	Affinity purified

Target Details

Target:	MTHFD2L
Alternative Name:	MTHFD2L (MTHFD2L Products)
Background:	The function of MTHFD2L protein is not widely studied, and is yet to be elucidated fully.
Molecular Weight:	37 kDa (MW of target protein)

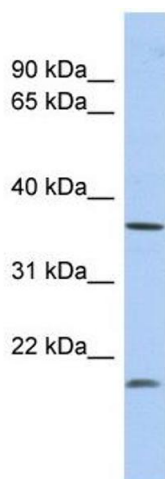
Application Details

Application Notes:	WB: 1 µg/mL Optimal conditions should be determined by the investigator.
Comment:	MTHFD2L Blocking Peptide, catalog no. 33R-9087, is also available for use as a blocking control in assays to test for specificity of this MTHFD2L antibody
Restrictions:	For Research Use only

Handling

Format:	Lyophilized
Reconstitution:	Lyophilized powder. Add distilled water for a 1 mg/mL concentration of MTHFD0 antibody in PBS
Concentration:	Lot specific
Buffer:	PBS
Handling Advice:	Avoid repeated freeze/thaw cycles.
Storage:	4 °C/-20 °C
Storage Comment:	Store at 2-8 °C for short periods. For longer periods of storage, store at -20 °C.

Images



Western Blotting

Image 1. MTHFD2L antibody used at 1 ug/ml to detect target protein.