

Datasheet for ABIN631986

**anti-PRR16 antibody (Middle Region)**[Go to Product page](#)**1** Image

## Overview

Quantity:	100 µL
Target:	PRR16
Binding Specificity:	Middle Region
Reactivity:	Human, Mouse, Rat
Host:	Rabbit
Clonality:	Polyclonal
Conjugate:	This PRR16 antibody is un-conjugated
Application:	Western Blotting (WB)

## Product Details

Immunogen:	PRR16 antibody was raised using the middle region of PRR16 corresponding to a region with amino acids RERVRFNQYHGYCPDCDTRYNIKNREVHLHSEPVHPPGKIPHQGPPL
Specificity:	PRR16 antibody was raised against the middle region of PRR16
Purification:	Affinity purified

## Target Details

Target:	PRR16
Alternative Name:	PRR16 ( <a href="#">PRR16 Products</a> )
Background:	The function of PRR16 protein is not widely studied, and is yet to be elucidated fully.
Molecular Weight:	30 kDa (MW of target protein)

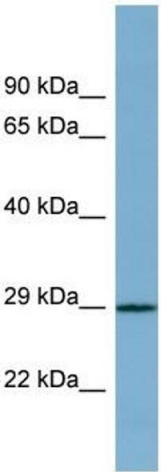
## Application Details

Application Notes:	WB: 1 µg/mL Optimal conditions should be determined by the investigator.
Comment:	PRR16 Blocking Peptide, catalog no. 33R-7888, is also available for use as a blocking control in assays to test for specificity of this PRR16 antibody
Restrictions:	For Research Use only

## Handling

Format:	Lyophilized
Reconstitution:	Lyophilized powder. Add distilled water for a 1 mg/mL concentration of PRR16 antibody in PBS
Concentration:	Lot specific
Buffer:	PBS
Handling Advice:	Avoid repeated freeze/thaw cycles. Dilute only prior to immediate use.
Storage:	4 °C/-20 °C
Storage Comment:	Store at 2-8 °C for short periods. For longer periods of storage, store at -20 °C.

## Images



**Western Blotting**

**Image 1.** PRR16 antibody used at 1 ug/ml to detect target protein.