

Datasheet for ABIN632017 **anti-ALAD antibody (N-Term)**



[Go to Product page](#)

1 Image

Overview

Quantity:	100 µL
Target:	ALAD
Binding Specificity:	N-Term
Reactivity:	Human
Host:	Rabbit
Clonality:	Polyclonal
Conjugate:	This ALAD antibody is un-conjugated
Application:	Western Blotting (WB)

Product Details

Immunogen:	ALAD antibody was raised using the N terminal of ALAD corresponding to a region with amino acids QPQSVLHSGYFHPLLRWQTATTTLNASNLIYPIFVTDVPDDIQPITSLP
Specificity:	ALAD antibody was raised against the N terminal of ALAD
Purification:	Affinity purified

Target Details

Target:	ALAD
Alternative Name:	ALAD (ALAD Products)
Background:	The ALAD enzyme is composed of 8 identical subunits and catalyzes the condensation of 2 molecules of delta-aminolevulinate to form porphobilinogen (a precursor of heme, cytochromes and other hemoproteins). ALAD catalyzes the second step in the porphyrin and heme

Target Details

biosynthetic pathway, zinc is essential for enzymatic activity. ALAD enzymatic activity is inhibited by lead and a defect in the ALAD structural gene can cause increased sensitivity to lead poisoning and acute hepatic porphyria.

Molecular Weight: 37 kDa (MW of target protein)

Application Details

Application Notes: WB: 1 µg/mL
Optimal conditions should be determined by the investigator.

Comment: ALAD Blocking Peptide, catalog no. 33R-7682, is also available for use as a blocking control in assays to test for specificity of this ALAD antibody

Restrictions: For Research Use only

Handling

Format: Lyophilized

Reconstitution: Lyophilized powder. Add distilled water for a 1 mg/mL concentration of ALAD antibody in PBS

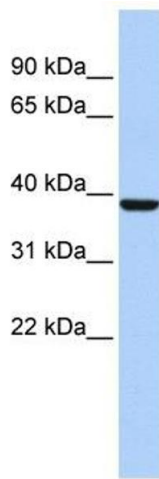
Concentration: Lot specific

Buffer: PBS

Handling Advice: Avoid repeated freeze/thaw cycles.
Dilute only prior to immediate use.

Storage: 4 °C/-20 °C

Storage Comment: Store at 2-8 °C for short periods. For longer periods of storage, store at -20 °C.



Western Blotting

Image 1. ALAD antibody used at 1 ug/ml to detect target protein.