

## Datasheet for ABIN632018 **anti-ALAD antibody (N-Term)**



[Go to Product page](#)

### 1 Image

#### Overview

Quantity:	100 µL
Target:	ALAD
Binding Specificity:	N-Term
Reactivity:	Human, Dog
Host:	Rabbit
Clonality:	Polyclonal
Conjugate:	This ALAD antibody is un-conjugated
Application:	Western Blotting (WB)

#### Product Details

Immunogen:	ALAD antibody was raised using the N terminal of ALAD corresponding to a region with amino acids EEMLRPLVEEGLRCVLIFGVPSRVPKDERGSAADSEESPAIEAIHLLRKT
Specificity:	ALAD antibody was raised against the N terminal of ALAD
Purification:	Affinity purified

#### Target Details

Target:	ALAD
Alternative Name:	ALAD ( <a href="#">ALAD Products</a> )
Background:	The ALAD enzyme is composed of 8 identical subunits and catalyzes the condensation of 2 molecules of delta-aminolevulinate to form porphobilinogen (a precursor of heme, cytochromes and other hemoproteins). ALAD catalyzes the second step in the porphyrin and heme

## Target Details

---

biosynthetic pathway, zinc is essential for enzymatic activity. ALAD enzymatic activity is inhibited by lead and a defect in the ALAD structural gene can cause increased sensitivity to lead poisoning and acute hepatic porphyria.

Molecular Weight: 39 kDa (MW of target protein)

## Application Details

---

Application Notes: WB: 0.5 µg/mL  
Optimal conditions should be determined by the investigator.

Comment: ALAD Blocking Peptide, catalog no. 33R-2375, is also available for use as a blocking control in assays to test for specificity of this ALAD antibody

Restrictions: For Research Use only

## Handling

---

Format: Lyophilized

Reconstitution: Lyophilized powder. Add distilled water for a 1 mg/mL concentration of ALAD antibody in PBS

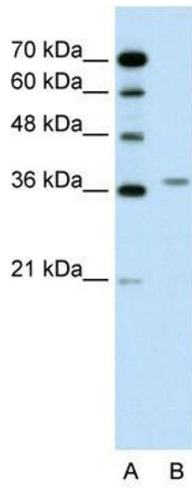
Concentration: Lot specific

Buffer: PBS

Handling Advice: Avoid repeated freeze/thaw cycles.  
Dilute only prior to immediate use.

Storage: 4 °C/-20 °C

Storage Comment: Store at 2-8 °C for short periods. For longer periods of storage, store at -20 °C.



### Western Blotting

**Image 1.** ALAD antibody used at 0.5 ug/ml to detect target protein.