

Datasheet for ABIN632024 **anti-RAB40C antibody (N-Term)**



[Go to Product page](#)

1 Image

Overview

| | |
|----------------------|---------------------------------------|
| Quantity: | 100 µL |
| Target: | RAB40C |
| Binding Specificity: | N-Term |
| Reactivity: | Human |
| Host: | Rabbit |
| Clonality: | Polyclonal |
| Conjugate: | This RAB40C antibody is un-conjugated |
| Application: | Western Blotting (WB) |

Product Details

| | |
|---------------|--|
| Immunogen: | RAB40 C antibody was raised using the N terminal of RAB40 corresponding to a region with amino acids QDGAAESPYAYSNGIDYKTTTILLDGRVRLELWDTSGQGRFCTIFRSYS |
| Specificity: | RAB40 C antibody was raised against the N terminal of RAB40 |
| Purification: | Affinity purified |

Target Details

| | |
|-------------------|---|
| Target: | RAB40C |
| Alternative Name: | RAB40C (RAB40C Products) |
| Background: | RAB40C is a probable substrate-recognition component of a SCF-like ECS (Elongin-Cullin-SOCS-box protein) E3 ubiquitin ligase complex which mediates the ubiquitination and subsequent proteasomal degradation of target proteins. |

Target Details

Molecular Weight: 31 kDa (MW of target protein)

Application Details

Application Notes: WB: 1 µg/mL
Optimal conditions should be determined by the investigator.

Comment: RAB40C Blocking Peptide, catalog no. 33R-7497, is also available for use as a blocking control in assays to test for specificity of this RAB40C antibody

Restrictions: For Research Use only

Handling

Format: Lyophilized

Reconstitution: Lyophilized powder. Add distilled water for a 1 mg/mL concentration of RAB40 antibody in PBS

Concentration: Lot specific

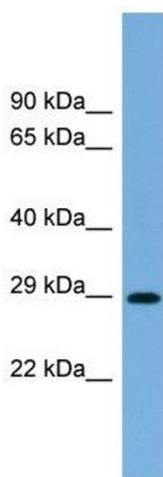
Buffer: PBS

Handling Advice: Avoid repeated freeze/thaw cycles.
Dilute only prior to immediate use.

Storage: 4 °C/-20 °C

Storage Comment: Store at 2-8 °C for short periods. For longer periods of storage, store at -20 °C.

Images



Western Blotting

Image 1. RAB40C antibody used at 1 ug/ml to detect target protein.