

Datasheet for ABIN632035 **anti-CYP27C1 antibody (Middle Region)**



[Go to Product page](#)

1 Image

Overview

Quantity:	100 µL
Target:	CYP27C1
Binding Specificity:	Middle Region
Reactivity:	Human
Host:	Rabbit
Clonality:	Polyclonal
Conjugate:	This CYP27C1 antibody is un-conjugated
Application:	Western Blotting (WB)

Product Details

Immunogen:	CYP27 C1 antibody was raised using the middle region of CYP27 1 corresponding to a region with amino acids VTQEDLVIGGYLIPKGTQLALCHYATSYQDENFPRAKEFRPERWLRKGD
Specificity:	CYP27 C1 antibody was raised against the middle region of CYP27 1
Purification:	Affinity purified

Target Details

Target:	CYP27C1
Alternative Name:	CYP27C1 (CYP27C1 Products)
Background:	This gene encodes a member of the cytochrome P450 superfamily of enzymes. The cytochrome P450 proteins are monooxygenases which catalyze many reactions involved in drug metabolism and synthesis of cholesterol, steroids and other lipids.

Target Details

Molecular Weight: 43 kDa (MW of target protein)

Application Details

Application Notes: WB: 1 µg/mL
Optimal conditions should be determined by the investigator.

Comment: CYP27C1 Blocking Peptide, catalog no. 33R-9856, is also available for use as a blocking control in assays to test for specificity of this CYP27C1 antibody

Restrictions: For Research Use only

Handling

Format: Lyophilized

Reconstitution: Lyophilized powder. Add distilled water for a 1 mg/mL concentration of CYP20 1 antibody in PBS

Concentration: Lot specific

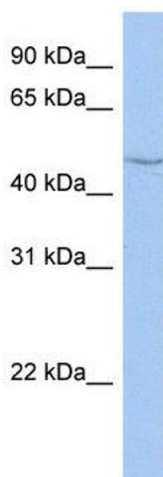
Buffer: PBS

Handling Advice: Avoid repeated freeze/thaw cycles.
Dilute only prior to immediate use.

Storage: 4 °C/-20 °C

Storage Comment: Store at 2-8 °C for short periods. For longer periods of storage, store at -20 °C.

Images



Western Blotting

Image 1. CYP27C1 antibody used at 1 ug/ml to detect target protein.