

Datasheet for ABIN632038 **anti-KIF5C antibody (N-Term)**



[Go to Product page](#)

1 Image

Overview

Quantity:	100 µL
Target:	KIF5C
Binding Specificity:	N-Term
Reactivity:	Mouse, Human, Rat
Host:	Rabbit
Clonality:	Polyclonal
Conjugate:	This KIF5C antibody is un-conjugated
Application:	Western Blotting (WB)

Product Details

Immunogen:	KIF5 C antibody was raised using the N terminal of KIF5 corresponding to a region with amino acids TVVIGQGKPYVFDRLPPNTTQEQVYNACAKQIVKDVLEGYNGTIFAYGQ
Specificity:	KIF5 C antibody was raised against the N terminal of KIF5
Purification:	Affinity purified

Target Details

Target:	KIF5C
Alternative Name:	KIF5C (KIF5C Products)
Background:	KIF5C belongs to the kinesin-like protein family, Kinesin subfamily. It contains 1 kinesin-motor domain. Kinesin is a microtubule-associated force-producing protein that may play a role in organelle transport.

Target Details

Molecular Weight: 109 kDa (MW of target protein)

Application Details

Application Notes: WB: 1 µg/mL
Optimal conditions should be determined by the investigator.

Comment: KIF5C Blocking Peptide, catalog no. 33R-9375, is also available for use as a blocking control in assays to test for specificity of this KIF5C antibody

Restrictions: For Research Use only

Handling

Format: Lyophilized

Reconstitution: Lyophilized powder. Add distilled water for a 1 mg/mL concentration of KIF0 antibody in PBS

Concentration: Lot specific

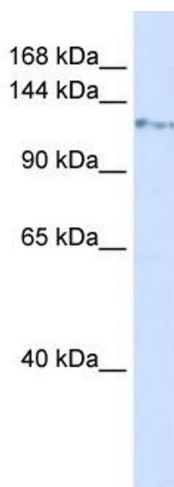
Buffer: PBS

Handling Advice: Avoid repeated freeze/thaw cycles.
Dilute only prior to immediate use.

Storage: 4 °C/-20 °C

Storage Comment: Store at 2-8 °C for short periods. For longer periods of storage, store at -20 °C.

Images



Western Blotting

Image 1. KIF5C antibody used at 1 µg/ml to detect target protein.