

## Datasheet for ABIN632046 **anti-EN1 antibody (C-Term)**



[Go to Product page](#)

### 1 Image

#### Overview

Quantity:	100 µL
Target:	EN1
Binding Specificity:	C-Term
Reactivity:	Human
Host:	Rabbit
Clonality:	Polyclonal
Conjugate:	This EN1 antibody is un-conjugated
Application:	Western Blotting (WB)

#### Product Details

Immunogen:	EN1 antibody was raised using the C terminal of EN1 corresponding to a region with amino acids LMGSANGGPVVKTDSSQQLVWPAWVYCTRYSDRPSSGPRTRKLLKKKKNEK
Specificity:	EN1 antibody was raised against the C terminal of EN1
Purification:	Affinity purified

#### Target Details

Target:	EN1
Alternative Name:	EN1 ( <a href="#">EN1 Products</a> )
Background:	Homeobox-containing genes are thought to have a role in controlling development. In Drosophila, the 'engrailed' (en) gene plays an important role during development in segmentation, where it is required for the formation of posterior compartments. Different

## Target Details

---

mutations in the mouse homologs, En1 and En2, produced different developmental defects that frequently are lethal. The human engrailed homologs 1 and 2 encode homeodomain-containing proteins and have been implicated in the control of pattern formation during development of the central nervous system. Homeobox-containing genes are thought to have a role in controlling development.

Molecular Weight: 40 kDa (MW of target protein)

Pathways: [Dopaminergic Neurogenesis](#)

## Application Details

---

Application Notes: WB: 1 µg/mL  
Optimal conditions should be determined by the investigator.

Comment: EN1 Blocking Peptide, catalog no. 33R-5203, is also available for use as a blocking control in assays to test for specificity of this EN1 antibody

Restrictions: For Research Use only

## Handling

---

Format: Lyophilized

Reconstitution: Lyophilized powder. Add distilled water for a 1 mg/mL concentration of EN1 antibody in PBS

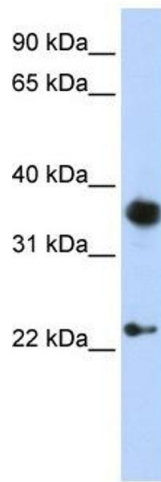
Concentration: Lot specific

Buffer: PBS

Handling Advice: Avoid repeated freeze/thaw cycles.  
Dilute only prior to immediate use.

Storage: 4 °C/-20 °C

Storage Comment: Store at 2-8 °C for short periods. For longer periods of storage, store at -20 °C.



### Western Blotting

**Image 1.** EN1 antibody used at 1 ug/ml to detect target protein.