

Datasheet for ABIN632052
anti-DCUN1D1 antibody



[Go to Product page](#)

2 Images

Overview

| | |
|--------------|---|
| Quantity: | 100 µL |
| Target: | DCUN1D1 |
| Reactivity: | Human, Mouse, Rat, Dog |
| Host: | Rabbit |
| Clonality: | Polyclonal |
| Conjugate: | This DCUN1D1 antibody is un-conjugated |
| Application: | Western Blotting (WB), Immunohistochemistry (IHC) |

Product Details

| | |
|---------------|--|
| Immunogen: | DCUN1 D1 antibody was raised using a synthetic peptide corresponding to a region with amino acids SQNDWKLDVATDNFFQNPELYIRESVKGSLDRKKLEQLYNRYKDPQDENK |
| Purification: | Affinity purified |

Target Details

| | |
|-------------------|---|
| Target: | DCUN1D1 |
| Alternative Name: | DCUN1D1 (DCUN1D1 Products) |
| Background: | DCUN1D1 may contribute to neddylation of cullin components of SCF-type E3 ubiquitin ligase complexes. Neddylation of cullins play an essential role in the regulation of SCF-type complexes activity. |
| Molecular Weight: | 28 kDa (MW of target protein) |

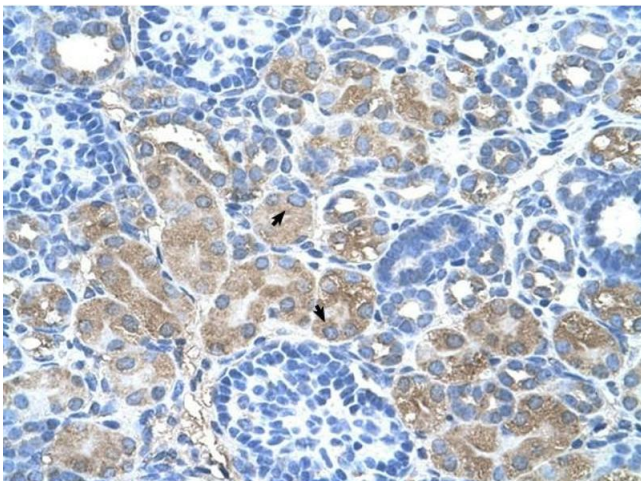
Application Details

| | |
|--------------------|--|
| Application Notes: | WB: 0.25 µg/mL, IHC: 4-8 µg/mL Optimal conditions should be determined by the investigator. |
| Comment: | DCUN1D1 Blocking Peptide, catalog no. 33R-8719, is also available for use as a blocking control in assays to test for specificity of this DCUN1D1 antibody |
| Restrictions: | For Research Use only |

Handling

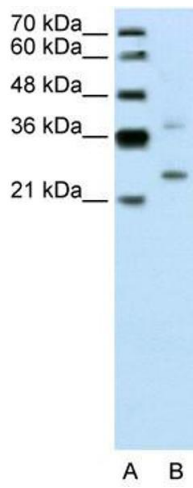
| | |
|------------------|--|
| Format: | Lyophilized |
| Reconstitution: | Lyophilized powder. Add distilled water for a 1 mg/mL concentration of DCUN0 1 antibody in PBS |
| Concentration: | Lot specific |
| Buffer: | PBS |
| Handling Advice: | Avoid repeated freeze/thaw cycles. |
| Storage: | 4 °C/-20 °C |
| Storage Comment: | Store at 2-8 °C for short periods. For longer periods of storage, store at -20 °C. |

Images



Immunohistochemistry

Image 1. DCUN1D1 antibody was used for immunohistochemistry at a concentration of 4-8 µg/ml to stain Epithelial cells of renal tubule (arrows) in Human Kidney. Magnification is at 400X



Western Blotting

Image 2. DCUN1D1 antibody used at 0.25 ug/ml to detect target protein.