

Datasheet for ABIN6320654  
**anti-KCTD10 antibody**



[Go to Product page](#)

1 Image

## Overview

Quantity:	200 µL
Target:	KCTD10
Reactivity:	Human, Mouse, Rat
Host:	Rabbit
Clonality:	Polyclonal
Conjugate:	This KCTD10 antibody is un-conjugated
Application:	Western Blotting (WB)

## Product Details

Isotype:	IgG
Purification:	Affinity purified

## Target Details

Target:	KCTD10
Alternative Name:	KCTD10 ( <a href="#">KCTD10 Products</a> )
Molecular Weight:	Calculated MW: 17 kDa/32 kDa/35 kDa Observed MW: 36 kDa
Gene ID:	83892
UniProt:	<a href="#">Q9H3F6</a>

## Application Details

Application Notes: Optimal working dilution should be determined by the investigator.

Restrictions: For Research Use only

## Handling

Format: Liquid

Concentration: > 1 mg/mL

Buffer: PBS, pH 7.3, 0.02 % sodium azide, 50 % glycerol.

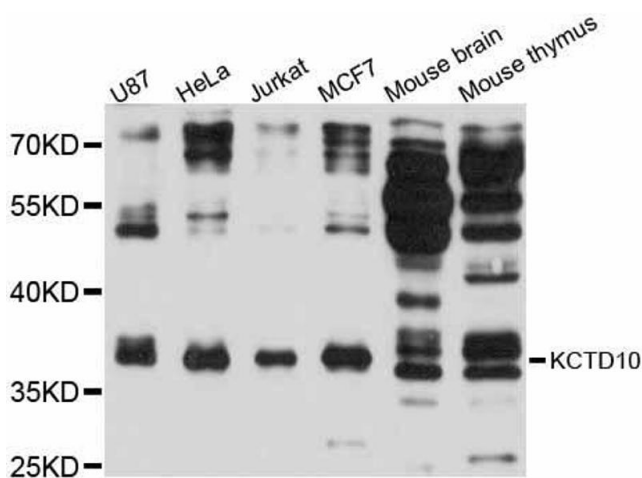
Preservative: Sodium azide

Precaution of Use: This product contains Sodium azide: a POISONOUS AND HAZARDOUS SUBSTANCE which should be handled by trained staff only.

Storage: -20 °C

Storage Comment: Aliquot and store at -20 °C. Avoid repeated freeze/thaw cycles.

## Images



### Western Blotting

**Image 1.** Western blot analysis of extracts of various cell lines, using KCTD10 antibody (ABIN5998052) at 1:3000 dilution.