

Datasheet for ABIN6321216
anti-WDFY2 antibody



[Go to Product page](#)

1 Image

Overview

| | |
|--------------|--------------------------------------|
| Quantity: | 200 µL |
| Target: | WDFY2 (ZFYVE22) |
| Reactivity: | Human, Mouse, Rat |
| Host: | Rabbit |
| Clonality: | Polyclonal |
| Conjugate: | This WDFY2 antibody is un-conjugated |
| Application: | Western Blotting (WB) |

Product Details

| | |
|---------------|-------------------|
| Isotype: | IgG |
| Purification: | Affinity purified |

Target Details

| | |
|-------------------|--|
| Target: | WDFY2 (ZFYVE22) |
| Alternative Name: | WDFY2 (ZFYVE22 Products) |
| Molecular Weight: | Calculated MW: 45 kDa Observed MW: 45 kDa |
| Gene ID: | 115825 |
| UniProt: | Q96P53 |

Application Details

Application Notes: Optimal working dilution should be determined by the investigator.

Restrictions: For Research Use only

Handling

Format: Liquid

Concentration: > 1 mg/mL

Buffer: PBS, pH 7.3, 0.02 % sodium azide, 50 % glycerol.

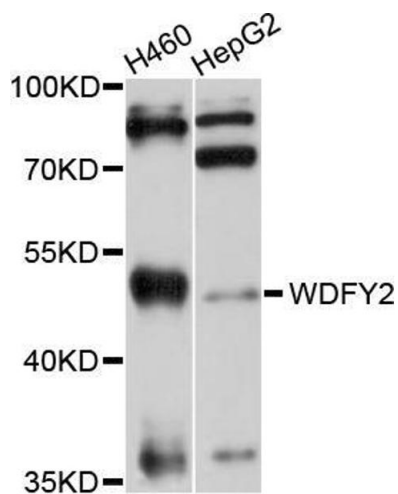
Preservative: Sodium azide

Precaution of Use: This product contains Sodium azide: a POISONOUS AND HAZARDOUS SUBSTANCE which should be handled by trained staff only.

Storage: -20 °C

Storage Comment: Aliquot and store at -20 °C. Avoid repeated freeze/thaw cycles.

Images



Western Blotting

Image 1. Western blot analysis of extracts of various cell lines, using WDFY2 antibody (ABIN5999186) at 1/1000 dilution.