

Datasheet for ABIN632125
anti-CCDC138 antibody (N-Term)



[Go to Product page](#)

1 Image

Overview

Quantity:	100 µL
Target:	CCDC138
Binding Specificity:	N-Term
Reactivity:	Human
Host:	Rabbit
Clonality:	Polyclonal
Conjugate:	This CCDC138 antibody is un-conjugated
Application:	Western Blotting (WB)

Product Details

Immunogen:	CCDC138 antibody was raised using the N terminal of CCDC138 corresponding to a region with amino acids EPRVVKPPGQDLVVEESLKSRYGLGGSCPDEYDFSNFYQSKYKRRTLSPG
Specificity:	CCDC138 antibody was raised against the N terminal of CCDC138
Purification:	Affinity purified

Target Details

Target:	CCDC138
Alternative Name:	CCDC138 (CCDC138 Products)
Background:	The function of the CCDC138 protein has not been widely studied, and is yet to be fully elucidated.

Target Details

Molecular Weight: 76 kDa (MW of target protein)

Pathways: [BCR Signaling](#)

Application Details

Application Notes: WB: 1 µg/mL
Optimal conditions should be determined by the investigator.

Comment: CCDC138 Blocking Peptide, catalog no. 33R-2646, is also available for use as a blocking control in assays to test for specificity of this CCDC138 antibody

Restrictions: For Research Use only

Handling

Format: Lyophilized

Reconstitution: Lyophilized powder. Add distilled water for a 1 mg/mL concentration of CCDC138 antibody in PBS

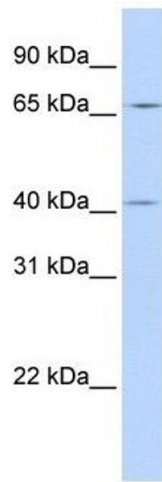
Concentration: Lot specific

Buffer: PBS

Handling Advice: Avoid repeated freeze/thaw cycles.
Dilute only prior to immediate use.

Storage: 4 °C/-20 °C

Storage Comment: Store at 2-8 °C for short periods. For longer periods of storage, store at -20 °C.



Western Blotting

Image 1. CCDC138 antibody used at 1 ug/ml to detect target protein.