

Datasheet for ABIN632135 **anti-CCT8 antibody**



[Go to Product page](#)

1 Image

Overview

Quantity:	100 µL
Target:	CCT8
Reactivity:	Human, Mouse, Rat, Dog
Host:	Rabbit
Clonality:	Polyclonal
Conjugate:	This CCT8 antibody is un-conjugated
Application:	Western Blotting (WB)

Product Details

Immunogen:	CCT8 antibody was raised using a synthetic peptide corresponding to a region with amino acids DMLEAGILDTYLGKYWAIKLATNAAVTVLRVDQIIMAKPAGGPKPPSGKK
Purification:	Affinity purified

Target Details

Target:	CCT8
Alternative Name:	CCT8 (CCT8 Products)
Background:	As a molecular chaperone, CCT8 assists the folding of proteins upon ATP hydrolysis. It is known to play a role, in vitro, in the folding of actin and tubulin.
Molecular Weight:	59 kDa (MW of target protein)

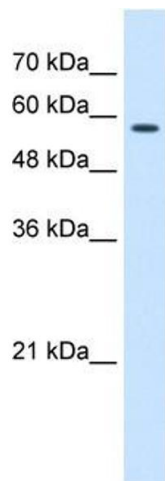
Application Details

Application Notes:	WB: 0.5 µg/mL Optimal conditions should be determined by the investigator.
Comment:	CCT8 Blocking Peptide, catalog no. 33R-2076, is also available for use as a blocking control in assays to test for specificity of this CCT8 antibody
Restrictions:	For Research Use only

Handling

Format:	Lyophilized
Reconstitution:	Lyophilized powder. Add distilled water for a 1 mg/mL concentration of CCT8 antibody in PBS
Concentration:	Lot specific
Buffer:	PBS
Handling Advice:	Avoid repeated freeze/thaw cycles.
Storage:	4 °C/-20 °C
Storage Comment:	Store at 2-8 °C for short periods. For longer periods of storage, store at -20 °C.

Images



Western Blotting

Image 1. CCT8 antibody used at 0.5 µg/ml to detect target protein.