

Datasheet for ABIN632140 **anti-WFDC1 antibody (N-Term)**



[Go to Product page](#)

1 Image

Overview

Quantity:	100 µL
Target:	WFDC1
Binding Specificity:	N-Term
Reactivity:	Human
Host:	Rabbit
Clonality:	Polyclonal
Conjugate:	This WFDC1 antibody is un-conjugated
Application:	Western Blotting (WB)

Product Details

Immunogen:	WFDC1 antibody was raised using the N terminal of WFDC1 corresponding to a region with amino acids WKRALPARLAEKSRAEEAGAPGGPRQPRADRCPPPPRTLPPGACQAARCQ
Specificity:	WFDC1 antibody was raised against the N terminal of WFDC1
Purification:	Affinity purified

Target Details

Target:	WFDC1
Alternative Name:	WFDC1 (WFDC1 Products)
Background:	This gene encodes a member of the WAP-type four disulfide core domain family. The WAP-type four-disulfide core domain, or WAP signature motif, contains eight cysteines forming four disulfide bonds at the core of the protein, and functions as a protease inhibitor in many family

Target Details

members.

Molecular Weight: 21 kDa (MW of target protein)

Application Details

Application Notes: WB: 1 µg/mL

Optimal conditions should be determined by the investigator.

Comment: WFDC1 Blocking Peptide, catalog no. 33R-9964, is also available for use as a blocking control in assays to test for specificity of this WFDC1 antibody

Restrictions: For Research Use only

Handling

Format: Lyophilized

Reconstitution: Lyophilized powder. Add distilled water for a 1 mg/mL concentration of WFDC1 antibody in PBS

Concentration: Lot specific

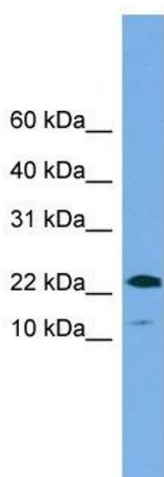
Buffer: PBS

Handling Advice: Avoid repeated freeze/thaw cycles.
Dilute only prior to immediate use.

Storage: 4 °C/-20 °C

Storage Comment: Store at 2-8 °C for short periods. For longer periods of storage, store at -20 °C.

Images



Western Blotting

Image 1. WFDC1 antibody used at 1 ug/ml to detect target protein.