

Datasheet for ABIN632141
anti-CCDC63 antibody (Middle Region)



[Go to Product page](#)

1 Image

Overview

Quantity:	100 µL
Target:	CCDC63
Binding Specificity:	Middle Region
Reactivity:	Human, Rat, Mouse
Host:	Rabbit
Clonality:	Polyclonal
Conjugate:	This CCDC63 antibody is un-conjugated
Application:	Western Blotting (WB)

Product Details

Immunogen:	CCDC63 antibody was raised using the middle region of CCDC63 corresponding to a region with amino acids EQSSQAYEQRVEAMARMAAMKDRQKKDTSQYNLEIRELERLYAHESKLKS
Specificity:	CCDC63 antibody was raised against the middle region of CCDC63
Purification:	Affinity purified

Target Details

Target:	CCDC63
Alternative Name:	CCDC63 (CCDC63 Products)
Background:	The function of CCDC63 protein is not widely studied, and is yet to be elucidated fully.
Molecular Weight:	66 kDa (MW of target protein)

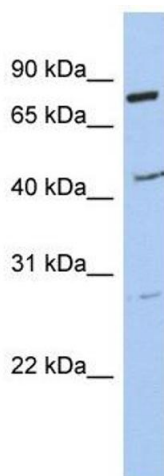
Application Details

Application Notes:	WB: 1 µg/mL Optimal conditions should be determined by the investigator.
Comment:	CCDC63 Blocking Peptide, catalog no. 33R-2679, is also available for use as a blocking control in assays to test for specificity of this CCDC63 antibody
Restrictions:	For Research Use only

Handling

Format:	Lyophilized
Reconstitution:	Lyophilized powder. Add distilled water for a 1 mg/mL concentration of CCDC63 antibody in PBS
Concentration:	Lot specific
Buffer:	PBS
Handling Advice:	Avoid repeated freeze/thaw cycles. Dilute only prior to immediate use.
Storage:	4 °C/-20 °C
Storage Comment:	Store at 2-8 °C for short periods. For longer periods of storage, store at -20 °C.

Images



Western Blotting

Image 1. CCDC63 antibody used at 1 ug/ml to detect target protein.