

Datasheet for ABIN632144
anti-MAT2B antibody (N-Term)



[Go to Product page](#)

1 Image

Overview

Quantity:	100 µL
Target:	MAT2B
Binding Specificity:	N-Term
Reactivity:	Human, Mouse, Rat
Host:	Rabbit
Clonality:	Polyclonal
Conjugate:	This MAT2B antibody is un-conjugated
Application:	Western Blotting (WB)

Product Details

Immunogen:	MAT2 B antibody was raised using the N terminal of MAT2 corresponding to a region with amino acids KEFQQNNWHAVGCGFRRARPKFEQVNLDSNAVHHIIHDFQPHVIVHCAA
Specificity:	MAT2 B antibody was raised against the N terminal of MAT2
Purification:	Affinity purified

Target Details

Target:	MAT2B
Alternative Name:	MAT2B (MAT2B Products)
Background:	MAT2B belongs to the methionine adenosyltransferase (MAT) family. MAT catalyzes the biosynthesis of S-adenosylmethionine from methionine and ATP. This protein is the regulatory beta subunit of MAT.

Target Details

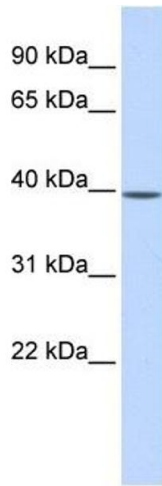
Molecular Weight:	36 kDa (MW of target protein)
Pathways:	Ribonucleoside Biosynthetic Process , Methionine Biosynthetic Process , SARS-CoV-2 Protein Interactome

Application Details

Application Notes:	WB: 1 µg/mL Optimal conditions should be determined by the investigator.
Comment:	MAT2B Blocking Peptide, catalog no. 33R-4332, is also available for use as a blocking control in assays to test for specificity of this MAT2B antibody
Restrictions:	For Research Use only

Handling

Format:	Lyophilized
Reconstitution:	Lyophilized powder. Add distilled water for a 1 mg/mL concentration of MAT0 antibody in PBS
Concentration:	Lot specific
Buffer:	PBS
Handling Advice:	Avoid repeated freeze/thaw cycles. Dilute only prior to immediate use.
Storage:	4 °C/-20 °C
Storage Comment:	Store at 2-8 °C for short periods. For longer periods of storage, store at -20 °C.



Western Blotting

Image 1. MAT2B antibody used at 1 ug/ml to detect target protein.