

## Datasheet for ABIN632148 **anti-ITPK1 antibody (N-Term)**



[Go to Product page](#)

### 1 Image

#### Overview

Quantity:	100 µL
Target:	ITPK1
Binding Specificity:	N-Term
Reactivity:	Human, Mouse, Rat
Host:	Rabbit
Clonality:	Polyclonal
Conjugate:	This ITPK1 antibody is un-conjugated
Application:	Western Blotting (WB)

#### Product Details

Immunogen:	ITPK1 antibody was raised using the N terminal of ITPK1 corresponding to a region with amino acids MEVVQLNLSRPIEEQGPLDVIIHKLTDVILEADQNSQSLELVHRFQEYI
Specificity:	ITPK1 antibody was raised against the N terminal of ITPK1
Purification:	Affinity purified

#### Target Details

Target:	ITPK1
Alternative Name:	ITPK1 ( <a href="#">ITPK1 Products</a> )
Background:	ITPK1 is the kinase that can phosphorylate various inositol polyphosphate such as Ins(3,4,5,6)P4 or Ins(1,3,4)P3. It may also act as an isomerase that interconverts the inositol tetraphosphate isomers Ins(1,3,4,5)P4 and Ins(1,3,4,6)P4 in the presence of ADP and

## Target Details

---

magnesium. It probably acts as the rate-limiting enzyme of the InsP6 pathway. ITPK1 modifies TNF-alpha-induced apoptosis by interfering with the activation of TNFRSF1A-associated death domain.

Molecular Weight: 45 kDa (MW of target protein)

## Application Details

---

Application Notes: WB: 1 µg/mL  
Optimal conditions should be determined by the investigator.

Comment: ITPK1 Blocking Peptide, catalog no. 33R-5984, is also available for use as a blocking control in assays to test for specificity of this ITPK1 antibody

Restrictions: For Research Use only

## Handling

---

Format: Lyophilized

Reconstitution: Lyophilized powder. Add distilled water for a 1 mg/mL concentration of ITPK1 antibody in PBS

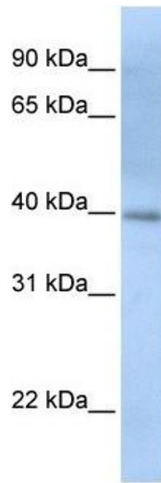
Concentration: Lot specific

Buffer: PBS

Handling Advice: Avoid repeated freeze/thaw cycles.  
Dilute only prior to immediate use.

Storage: 4 °C/-20 °C

Storage Comment: Store at 2-8 °C for short periods. For longer periods of storage, store at -20 °C.



### Western Blotting

**Image 1.** ITPK1 antibody used at 1 ug/ml to detect target protein.