

Datasheet for ABIN632160
anti-TADA1 antibody



[Go to Product page](#)

1 Image

Overview

Quantity:	100 µL
Target:	TADA1
Reactivity:	Human, Mouse, Rat
Host:	Rabbit
Clonality:	Polyclonal
Conjugate:	This TADA1 antibody is un-conjugated
Application:	Western Blotting (WB)

Product Details

Immunogen:	TADA1 L antibody was raised using a synthetic peptide corresponding to a region with amino acids REVIPTHTVYALNIERIIITKLWHPNHEELQQDKVHRQRLAAKEGLLLC
Purification:	Affinity purified

Target Details

Target:	TADA1
Alternative Name:	TADA1L (TADA1 Products)
Background:	TADA1L belongs to the TADA1L family. It is probably involved in transcriptional regulation.
Molecular Weight:	37 kDa (MW of target protein)

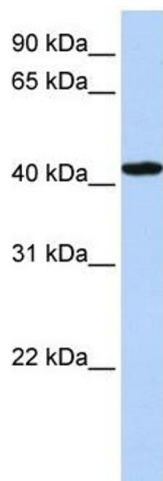
Application Details

Application Notes:	WB: 1 µg/mL Optimal conditions should be determined by the investigator.
Comment:	TADA1L Blocking Peptide, catalog no. 33R-7893, is also available for use as a blocking control in assays to test for specificity of this TADA1L antibody
Restrictions:	For Research Use only

Handling

Format:	Lyophilized
Reconstitution:	Lyophilized powder. Add distilled water for a 1 mg/mL concentration of TADA0 antibody in PBS
Concentration:	Lot specific
Buffer:	PBS
Handling Advice:	Avoid repeated freeze/thaw cycles.
Storage:	4 °C/-20 °C
Storage Comment:	Store at 2-8 °C for short periods. For longer periods of storage, store at -20 °C.

Images



Western Blotting

Image 1. TADA1L antibody used at 1 ug/ml to detect target protein.