

Datasheet for ABIN632163  
**anti-IFIT3 antibody (N-Term)**

3 Images



[Go to Product page](#)

## Overview

Quantity:	100 µL
Target:	IFIT3
Binding Specificity:	N-Term
Reactivity:	Human
Host:	Rabbit
Clonality:	Polyclonal
Conjugate:	This IFIT3 antibody is un-conjugated
Application:	Western Blotting (WB), Immunohistochemistry (IHC)

## Product Details

Immunogen:	IFIT3 antibody was raised using the N terminal of IFIT3 corresponding to a region with amino acids ATMYNLLAYIKHLDGNNEAALECLRQAEELIQEHADQAEIRSLVTWGN Y
Specificity:	IFIT3 antibody was raised against the N terminal of IFIT3
Purification:	Affinity purified

## Target Details

Target:	IFIT3
Alternative Name:	IFIT3 ( <a href="#">IFIT3 Products</a> )
Background:	IFIT3 is involved in protein binding.
Molecular Weight:	56 kDa (MW of target protein)

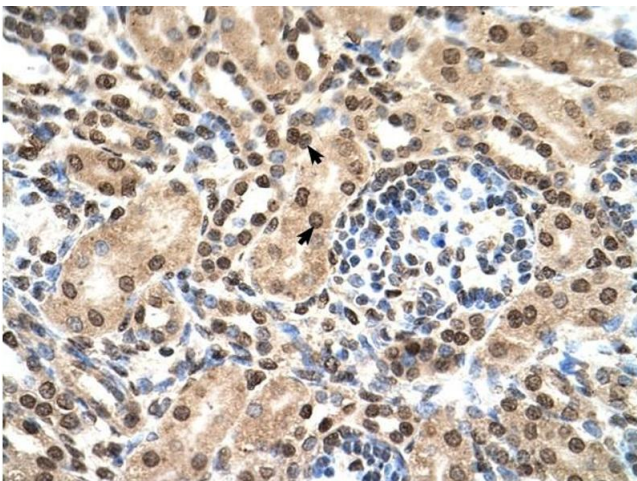
## Application Details

Application Notes:	WB: 0.25 µg/mL, IHC: 4-8 µg/mL Optimal conditions should be determined by the investigator.
Comment:	IFIT3 Blocking Peptide, catalog no. 33R-1568, is also available for use as a blocking control in assays to test for specificity of this IFIT3 antibody
Restrictions:	For Research Use only

## Handling

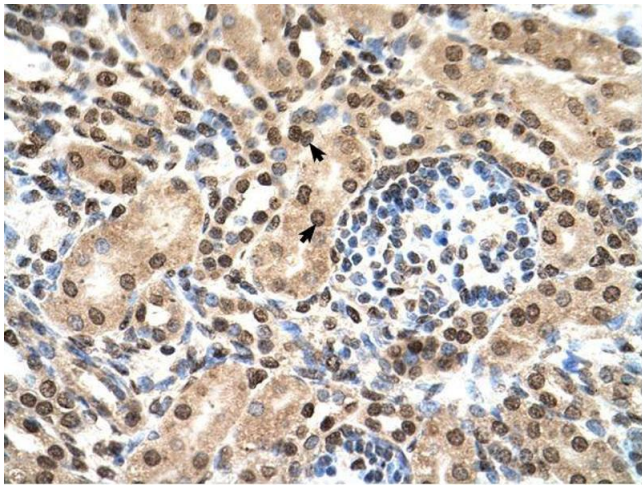
Format:	Lyophilized
Reconstitution:	Lyophilized powder. Add distilled water for a 1 mg/mL concentration of IFIT3 antibody in PBS
Concentration:	Lot specific
Buffer:	PBS
Handling Advice:	Avoid repeated freeze/thaw cycles. Dilute only prior to immediate use.
Storage:	4 °C/-20 °C
Storage Comment:	Store at 2-8 °C for short periods. For longer periods of storage, store at -20 °C.

## Images



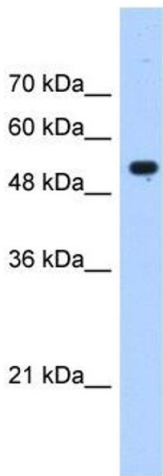
### Immunohistochemistry

**Image 1.** IFIT3 antibody was used for immunohistochemistry at a concentration of 4-8 µg/ml to stain Epithelial cells of renal tubule (arrows) in Human Kidney. Magnification is at 400X



### Immunohistochemistry

**Image 2.** IFIT3 antibody was used for immunohistochemistry at a concentration of 4-8 ug/ml. Magnification is at 400X



Rabbit Anti-IFIT3 Antibody  
Catalog Number: ARP46034  
Lot Number: QC16911  
Lane: HepG2 Cell Lysate

Antibody Titration: 0.25µg/ml  
Gel Concentration: 12%

### Western Blotting

**Image 3.** IFIT3 antibody used at 0.25 ug/ml to detect target protein.