

Datasheet for ABIN632169

anti-LIX1 antibody[Go to Product page](#)**1** Image

Overview

Quantity:	100 µL
Target:	LIX1
Reactivity:	Human, Mouse, Rat
Host:	Rabbit
Clonality:	Polyclonal
Conjugate:	This LIX1 antibody is un-conjugated
Application:	Western Blotting (WB)

Product Details

Immunogen:	LIX1 antibody was raised using a synthetic peptide corresponding to a region with amino acids TLPGGSCFGNFQCCLSRAEARRDAAKVALINSLFNELPSRRITKEFIMES
Purification:	Affinity purified

Target Details

Target:	LIX1
Alternative Name:	LIX1 (LIX1 Products)
Background:	The function of LIX1 protein is not widely studied, and is yet to be elucidated fully.
Molecular Weight:	32 kDa (MW of target protein)

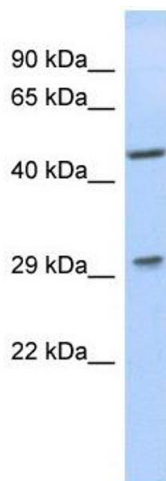
Application Details

Application Notes:	WB: 1 µg/mL Optimal conditions should be determined by the investigator.
Comment:	LIX1 Blocking Peptide, catalog no. 33R-9181, is also available for use as a blocking control in assays to test for specificity of this LIX1 antibody
Restrictions:	For Research Use only

Handling

Format:	Lyophilized
Reconstitution:	Lyophilized powder. Add distilled water for a 1 mg/mL concentration of LIX1 antibody in PBS
Concentration:	Lot specific
Buffer:	PBS
Handling Advice:	Avoid repeated freeze/thaw cycles.
Storage:	4 °C/-20 °C
Storage Comment:	Store at 2-8 °C for short periods. For longer periods of storage, store at -20 °C.

Images



Western Blotting

Image 1. LIX1 antibody used at 1 ug/ml to detect target protein.