

Datasheet for ABIN632176  
**anti-PRRC2B antibody (N-Term)**



[Go to Product page](#)

1 Image

## Overview

Quantity:	100 µL
Target:	PRRC2B
Binding Specificity:	N-Term
Reactivity:	Human, Mouse
Host:	Rabbit
Clonality:	Polyclonal
Conjugate:	This PRRC2B antibody is un-conjugated
Application:	Western Blotting (WB)

## Product Details

Immunogen:	KIAA0515 antibody was raised using the N terminal of KIAA0515 corresponding to a region with amino acids ATASQPPELQPGLQKSVSNLQKPTQSISQENTNSVPGGPKSWAQLNGK
Specificity:	KIAA0515 antibody was raised against the N terminal of KIAA0515
Purification:	Affinity purified

## Target Details

Target:	PRRC2B
Alternative Name:	KIAA0515 ( <a href="#">PRRC2B Products</a> )
Background:	The function of KIAA0515 protein is not widely studied, and is yet to be elucidated fully.
Molecular Weight:	48 kDa (MW of target protein)

## Target Details

Pathways: [SARS-CoV-2 Protein Interactome](#)

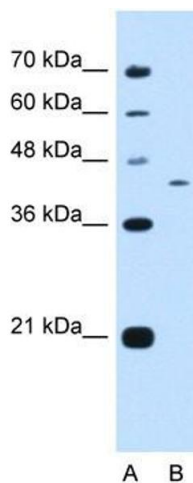
## Application Details

Application Notes:	WB: 0.25 µg/mL Optimal conditions should be determined by the investigator.
Comment:	KIAA0515 Blocking Peptide, catalog no. 33R-1551, is also available for use as a blocking control in assays to test for specificity of this KIAA0515 antibody
Restrictions:	For Research Use only

## Handling

Format:	Lyophilized
Reconstitution:	Lyophilized powder. Add distilled water for a 1 mg/mL concentration of KIAA0515 antibody in PBS
Concentration:	Lot specific
Buffer:	PBS
Handling Advice:	Avoid repeated freeze/thaw cycles. Dilute only prior to immediate use.
Storage:	4 °C/-20 °C
Storage Comment:	Store at 2-8 °C for short periods. For longer periods of storage, store at -20 °C.

## Images



### Western Blotting

**Image 1.** KIAA0515 antibody used at 0.25 ug/ml to detect target protein.