

Datasheet for ABIN632186

**anti-ST14 antibody****3** Images[Go to Product page](#)

## Overview

Quantity:	100 µL
Target:	ST14
Reactivity:	Human, Mouse, Rat
Host:	Rabbit
Clonality:	Polyclonal
Conjugate:	This ST14 antibody is un-conjugated
Application:	Western Blotting (WB), Immunohistochemistry (IHC)

## Product Details

Immunogen:	ST14 antibody was raised using a synthetic peptide corresponding to a region with amino acids SHVFPAGKAIWVTGWGHTQYGGTGALILQKGEIRVINQTTCEMLLPQQIT
Purification:	Affinity purified

## Target Details

Target:	ST14
Alternative Name:	ST14 ( <a href="#">ST14 Products</a> )
Background:	ST14 is an epithelial-derived, integral membrane serine protease. This protease forms a complex with the Kunitz-type serine protease inhibitor, HAI-1, and is found to be activated by sphingosine 1-phosphate. This protease has been shown to cleave and activate hepatocyte growth factor/scattering factor, and urokinase plasminogen activator, which suggest the function of this protease as an epithelial membrane activator for other proteases and latent

## Target Details

growth factors. The expression of this protease has been associated with breast, colon, prostate, and ovarian tumors, which implicates its role in cancer invasion, and metastasis.

Molecular Weight: 46 kDa (MW of target protein)

## Application Details

Application Notes: WB: 0.25 µg/mL, IHC: 4-8 µg/mL  
Optimal conditions should be determined by the investigator.

Comment: ST14 Blocking Peptide, catalog no. 33R-8520, is also available for use as a blocking control in assays to test for specificity of this ST14 antibody

Restrictions: For Research Use only

## Handling

Format: Lyophilized

Reconstitution: Lyophilized powder. Add distilled water for a 1 mg/mL concentration of ST14 antibody in PBS

Concentration: Lot specific

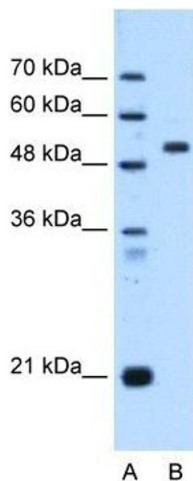
Buffer: PBS

Handling Advice: Avoid repeated freeze/thaw cycles.

Storage: 4 °C/-20 °C

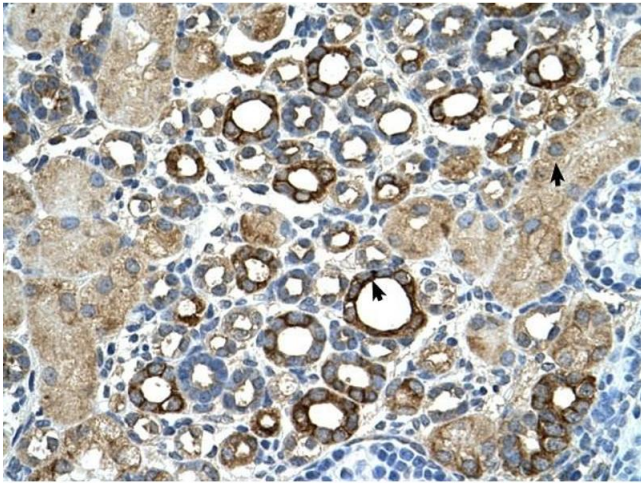
Storage Comment: Store at 2-8 °C for short periods. For longer periods of storage, store at -20 °C.

## Images



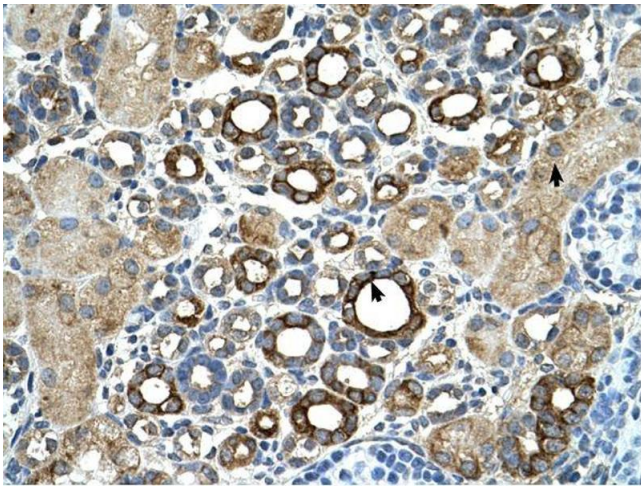
### Western Blotting

**Image 1.** ST14 antibody used at 0.25 ug/ml to detect target protein.



#### Immunohistochemistry

**Image 2.** ST14 antibody was used for immunohistochemistry at a concentration of 4-8 ug/ml to stain Epithelial cells of renal tubule (arrows) in Human Kidney. Magnification is at 400X



#### Immunohistochemistry

**Image 3.** ST14 antibody was used for immunohistochemistry at a concentration of 4-8 ug/ml. Magnification is at 400X