

Datasheet for ABIN632189 **anti-LYPLA2 antibody (N-Term)**



[Go to Product page](#)

1 Image

Overview

Quantity:	100 µL
Target:	LYPLA2
Binding Specificity:	N-Term
Reactivity:	Human, Mouse, Rat
Host:	Rabbit
Clonality:	Polyclonal
Conjugate:	This LYPLA2 antibody is un-conjugated
Application:	Western Blotting (WB)

Product Details

Immunogen:	LYPLA2 antibody was raised using the N terminal of LYPLA2 corresponding to a region with amino acids MCGNTMSVPLLTDAA TVSGAERETA AVIFLHGLGDTGHSWADALSTIRLP
Specificity:	LYPLA2 antibody was raised against the N terminal of LYPLA2
Purification:	Affinity purified

Target Details

Target:	LYPLA2
Alternative Name:	LYPLA2 (LYPLA2 Products)
Background:	Lysophospholipases are enzymes that act on biological membranes to regulate the multifunctional lysophospholipids. Lysophospholipases are enzymes that act on biological membranes to regulate the multifunctional lysophospholipids. There are alternatively spliced

Target Details

transcript variants described for this gene but the full length nature is not known yet.

Molecular Weight: 25 kDa (MW of target protein)

Application Details

Application Notes: WB: 1 µg/mL
Optimal conditions should be determined by the investigator.

Comment: LYPLA2 Blocking Peptide, catalog no. 33R-5812, is also available for use as a blocking control in assays to test for specificity of this LYPLA2 antibody

Restrictions: For Research Use only

Handling

Format: Lyophilized

Reconstitution: Lyophilized powder. Add distilled water for a 1 mg/mL concentration of LYPLA2 antibody in PBS

Concentration: Lot specific

Buffer: PBS

Handling Advice: Avoid repeated freeze/thaw cycles.
Dilute only prior to immediate use.

Storage: 4 °C/-20 °C

Storage Comment: Store at 2-8 °C for short periods. For longer periods of storage, store at -20 °C.

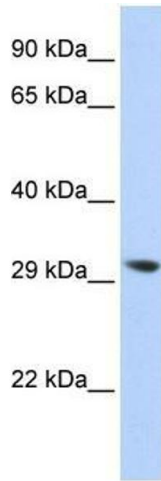


Image 1.