

Datasheet for ABIN632191
anti-Epsin 1 antibody (C-Term)



[Go to Product page](#)

1 Image

Overview

Quantity:	100 µL
Target:	Epsin 1 (EPN1)
Binding Specificity:	C-Term
Reactivity:	Human, Rat
Host:	Rabbit
Clonality:	Polyclonal
Conjugate:	This Epsin 1 antibody is un-conjugated
Application:	Western Blotting (WB)

Product Details

Immunogen:	Epsin 1 antibody was raised using the C terminal of EPN1 corresponding to a region with amino acids AATPTPTPTRKTPESFLGPNAALVDLDSLVSRLPGTPPGAKASNPFLPG
Specificity:	Epsin 1 antibody was raised against the C terminal of EPN1
Purification:	Affinity purified

Target Details

Target:	Epsin 1 (EPN1)
Alternative Name:	Epsin 1 (EPN1 Products)
Background:	EPN1 is an endocytic accessory protein that interacts with EPS15, the alpha subunit of the clathrin adaptor AP2, and clathrin, as well as with other accessory proteins for the endocytosis of clathrin-coated vesicles.

Target Details

Molecular Weight:	57 kDa (MW of target protein)
Pathways:	EGFR Signaling Pathway , EGFR Downregulation

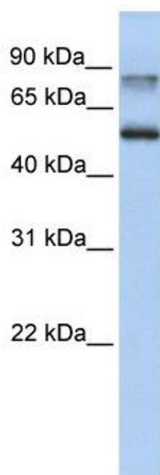
Application Details

Application Notes:	WB: 1 µg/mL Optimal conditions should be determined by the investigator.
Comment:	Epsin 1 Blocking Peptide, catalog no. 33R-1055, is also available for use as a blocking control in assays to test for specificity of this Epsin 1 antibody
Restrictions:	For Research Use only

Handling

Format:	Lyophilized
Reconstitution:	Lyophilized powder. Add distilled water for a 1 mg/mL concentration of EPN1 antibody in PBS
Concentration:	Lot specific
Buffer:	PBS
Handling Advice:	Avoid repeated freeze/thaw cycles. Dilute only prior to immediate use.
Storage:	4 °C/-20 °C
Storage Comment:	Store at 2-8 °C for short periods. For longer periods of storage, store at -20 °C.

Images



Western Blotting

Image 1. Epsin 1 antibody used at 1 µg/ml to detect target protein.