

Datasheet for ABIN632196 **anti-WBP2 antibody (N-Term)**



[Go to Product page](#)

1 Image

Overview

Quantity:	100 µL
Target:	WBP2
Binding Specificity:	N-Term
Reactivity:	Human, Mouse, Rat
Host:	Rabbit
Clonality:	Polyclonal
Conjugate:	This WBP2 antibody is un-conjugated
Application:	Western Blotting (WB)

Product Details

Immunogen:	WBP2 antibody was raised using the N terminal of WBP2 corresponding to a region with amino acids MKNVPEAFKGTKKGTVYLTPYRVIFLSKGDAMQSFMMPFYLMKDCEIKQ
Specificity:	WBP2 antibody was raised against the N terminal of WBP2
Purification:	Affinity purified

Target Details

Target:	WBP2
Alternative Name:	WBP2 (WBP2 Products)
Background:	The globular WW domain is composed of 38 to 40 semiconserved amino acids shared by proteins of diverse functions including structural, regulatory, and signaling proteins. The domain is involved in mediating protein-protein interactions through the binding

Target Details

Molecular Weight: 28 kDa (MW of target protein)

Application Details

Application Notes: WB: 1 µg/mL
Optimal conditions should be determined by the investigator.

Comment: WBP2 Blocking Peptide, catalog no. 33R-6156, is also available for use as a blocking control in assays to test for specificity of this WBP2 antibody

Restrictions: For Research Use only

Handling

Format: Lyophilized

Reconstitution: Lyophilized powder. Add distilled water for a 1 mg/mL concentration of WBP2 antibody in PBS

Concentration: Lot specific

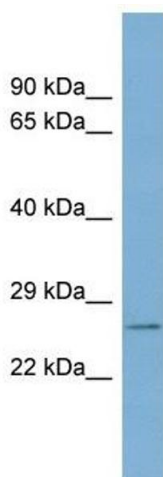
Buffer: PBS

Handling Advice: Avoid repeated freeze/thaw cycles.
Dilute only prior to immediate use.

Storage: 4 °C/-20 °C

Storage Comment: Store at 2-8 °C for short periods. For longer periods of storage, store at -20 °C.

Images



Western Blotting

Image 1. WBP2 antibody used at 1 ug/ml to detect target protein.