

Datasheet for ABIN632203 **anti-GTR2 antibody (N-Term)**



[Go to Product page](#)

1 Image

Overview

Quantity:	100 µL
Target:	GTR2 (RRAGC)
Binding Specificity:	N-Term
Reactivity:	Human
Host:	Rabbit
Clonality:	Polyclonal
Conjugate:	This GTR2 antibody is un-conjugated
Application:	Western Blotting (WB)

Product Details

Immunogen:	RRAGC antibody was raised using the N terminal of RRAGC corresponding to a region with amino acids RSGKSSIQKVVFHKMSPNETLFLESTNKIYKDDISNSSFVNFQIWDFFPGQ
Specificity:	RRAGC antibody was raised against the N terminal of RRAGC
Purification:	Affinity purified

Target Details

Target:	GTR2 (RRAGC)
Alternative Name:	RRAGC (RRAGC Products)
Background:	RRAGC is a monomeric guanine nucleotide-binding protein, or G protein. By binding GTP or GDP, small G proteins act as molecular switches in numerous cell processes and signaling pathways.

Target Details

Molecular Weight: 44 kDa (MW of target protein)

Pathways: [Autophagy](#)

Application Details

Application Notes: WB: 1 µg/mL

Optimal conditions should be determined by the investigator.

Comment: RRAGC Blocking Peptide, catalog no. 33R-8180, is also available for use as a blocking control in assays to test for specificity of this RRAGC antibody

Restrictions: For Research Use only

Handling

Format: Lyophilized

Reconstitution: Lyophilized powder. Add distilled water for a 1 mg/mL concentration of RRAGC antibody in PBS

Concentration: Lot specific

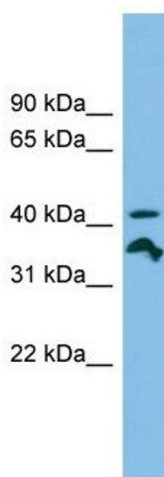
Buffer: PBS

Handling Advice: Avoid repeated freeze/thaw cycles.
Dilute only prior to immediate use.

Storage: 4 °C/-20 °C

Storage Comment: Store at 2-8 °C for short periods. For longer periods of storage, store at -20 °C.

Images



Western Blotting

Image 1. RRAGC antibody used at 1 µg/ml to detect target protein.