

Datasheet for ABIN632206 **anti-ASB11 antibody (C-Term)**



[Go to Product page](#)

1 Image

Overview

Quantity:	100 µL
Target:	ASB11
Binding Specificity:	C-Term
Reactivity:	Human
Host:	Rabbit
Clonality:	Polyclonal
Conjugate:	This ASB11 antibody is un-conjugated
Application:	Western Blotting (WB)

Product Details

Immunogen:	ASB11 antibody was raised using the C terminal of ASB11 corresponding to a region with amino acids GQWLDTPLHAAARQSNVEVIHLLTDYGANLKRNRNAQGKSALDLAAPKSSV
Specificity:	ASB11 antibody was raised against the C terminal of ASB11
Purification:	Affinity purified

Target Details

Target:	ASB11
Alternative Name:	ASB11 (ASB11 Products)
Background:	ASB11 is a member of the ankyrin repeat and SOCS box-containing (ASB) family of proteins. They contain ankyrin repeat sequence and SOCS box domain. The SOCS box serves to couple suppressor of cytokine signalling (SOCS) proteins and their binding partners with the elongin B

Target Details

and C complex, possibly targeting them for degradation.

Molecular Weight: 33 kDa (MW of target protein)

Application Details

Application Notes: WB: 0.5 µg/mL
Optimal conditions should be determined by the investigator.

Comment: ASB11 Blocking Peptide, catalog no. 33R-3519, is also available for use as a blocking control in assays to test for specificity of this ASB11 antibody

Restrictions: For Research Use only

Handling

Format: Lyophilized

Reconstitution: Lyophilized powder. Add distilled water for a 1 mg/mL concentration of ASB11 antibody in PBS

Concentration: Lot specific

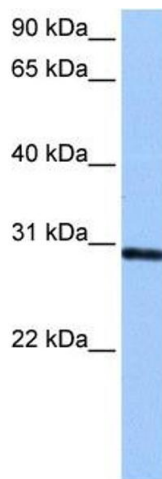
Buffer: PBS

Handling Advice: Avoid repeated freeze/thaw cycles.
Dilute only prior to immediate use.

Storage: 4 °C/-20 °C

Storage Comment: Store at 2-8 °C for short periods. For longer periods of storage, store at -20 °C.

Images



Western Blotting

Image 1. ASB11 antibody used at 0.5 ug/ml to detect target protein.