

Datasheet for ABIN632209

anti-C12ORF24 antibody (N-Term)[Go to Product page](#)**1** Image

Overview

Quantity:	100 µL
Target:	C12ORF24 (C12orf24)
Binding Specificity:	N-Term
Reactivity:	Human
Host:	Rabbit
Clonality:	Polyclonal
Conjugate:	This C12ORF24 antibody is un-conjugated
Application:	Western Blotting (WB)

Product Details

Immunogen:	C12 ORF24 antibody was raised using the N terminal Of C12 rf24 corresponding to a region with amino acids AVAGTEGGGGGSAGYSCYQNSKGSDRIKDGKYNVNSHIAKLQELWKTPQNNQ
Specificity:	C12 ORF24 antibody was raised against the N terminal Of C12 rf24
Purification:	Affinity purified

Target Details

Target:	C12ORF24 (C12orf24)
Alternative Name:	C12ORF24 (C12orf24 Products)
Background:	The function of C12orf24 protein has not been widely studied, and is yet to be fully elucidated.
Molecular Weight:	31 kDa (MW of target protein)

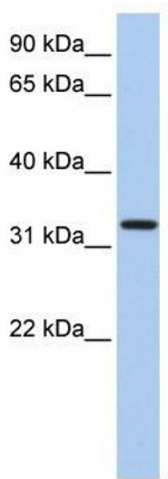
Application Details

Application Notes:	WB: 1 µg/mL Optimal conditions should be determined by the investigator.
Comment:	C12ORF24 Blocking Peptide, catalog no. 33R-1583, is also available for use as a blocking control in assays to test for specificity of this C12ORF24 antibody
Restrictions:	For Research Use only

Handling

Format:	Lyophilized
Reconstitution:	Lyophilized powder. Add distilled water for a 1 mg/mL concentration of C10 RF24 antibody in PBS
Concentration:	Lot specific
Buffer:	PBS
Handling Advice:	Avoid repeated freeze/thaw cycles. Dilute only prior to immediate use.
Storage:	4 °C/-20 °C
Storage Comment:	Store at 2-8 °C for short periods. For longer periods of storage, store at -20 °C.

Images



Western Blotting

Image 1. C12ORF24 antibody used at 1 ug/ml to detect target protein.