

## Datasheet for ABIN632213 **anti-ADPRM antibody (N-Term)**



[Go to Product page](#)

### 1 Image

#### Overview

Quantity:	100 µL
Target:	ADPRM (C17orf48)
Binding Specificity:	N-Term
Reactivity:	Human
Host:	Rabbit
Clonality:	Polyclonal
Conjugate:	This ADPRM antibody is un-conjugated
Application:	Western Blotting (WB)

#### Product Details

Immunogen:	C17 ORF48 antibody was raised using the N terminal Of C17 rf48 corresponding to a region with amino acids MDDKPNPEALSDSSERLFSFGVIADVQFADLEDGFNFQGTTRRRYYRHSL
Specificity:	C17 ORF48 antibody was raised against the N terminal Of C17 rf48
Purification:	Affinity purified

#### Target Details

Target:	ADPRM (C17orf48)
Alternative Name:	C17ORF48 ( <a href="#">C17orf48 Products</a> )
Background:	C17ORF48 hydrolyzes ADP-ribose, IDP-ribose, CDP-glycerol, CDP-choline and CDP-ethanolamine, but not other non-reducing ADP-sugars or CDP-glucose. May be involved in immune cell signaling as suggested by the second-messenger role of ADP-ribose, which

## Target Details

---

activates TRPM2 as a mediator of oxidative/nitrosative stress.

Molecular Weight: 39 kDa (MW of target protein)

## Application Details

---

Application Notes: WB: 1 µg/mL

Optimal conditions should be determined by the investigator.

Comment: C17ORF48 Blocking Peptide, catalog no. 33R-5825, is also available for use as a blocking control in assays to test for specificity of this C17ORF48 antibody

Restrictions: For Research Use only

## Handling

---

Format: Lyophilized

Reconstitution: Lyophilized powder. Add distilled water for a 1 mg/mL concentration of C10 RF48 antibody in PBS

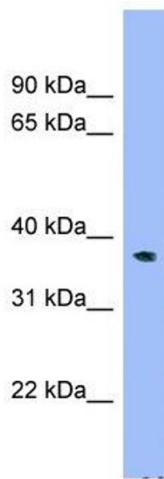
Concentration: Lot specific

Buffer: PBS

Handling Advice: Avoid repeated freeze/thaw cycles.  
Dilute only prior to immediate use.

Storage: 4 °C/-20 °C

Storage Comment: Store at 2-8 °C for short periods. For longer periods of storage, store at -20 °C.



### Western Blotting

**Image 1.** C17ORF48 antibody used at 1 ug/ml to detect target protein.