

Datasheet for ABIN632223  
**anti-GFPT2 antibody (Middle Region)**



[Go to Product page](#)

1 Image

## Overview

Quantity:	100 µL
Target:	GFPT2
Binding Specificity:	Middle Region
Reactivity:	Human, Mouse, Rat
Host:	Rabbit
Clonality:	Polyclonal
Conjugate:	This GFPT2 antibody is un-conjugated
Application:	Western Blotting (WB)

## Product Details

Immunogen:	GFPT2 antibody was raised using the middle region of GFPT2 corresponding to a region with amino acids TARQGRPIILCSKDDTESSKFAYKTIELPHTVDCLQGILSVIPLQLLSFH
Specificity:	GFPT2 antibody was raised against the middle region of GFPT2
Purification:	Affinity purified

## Target Details

Target:	GFPT2
Alternative Name:	GFPT2 ( <a href="#">GFPT2 Products</a> )
Background:	GFPT2 controls the flux of glucose into the hexosamine pathway. GFPT2 is most likely involved in regulating the availability of precursors for N- and O-linked glycosylation of proteins.

## Target Details

---

Molecular Weight: 77 kDa (MW of target protein)

## Application Details

---

Application Notes: WB: 1 µg/mL  
Optimal conditions should be determined by the investigator.

Comment: GFPT2 Blocking Peptide, catalog no. 33R-8983, is also available for use as a blocking control in assays to test for specificity of this GFPT2 antibody

Restrictions: For Research Use only

## Handling

---

Format: Lyophilized

Reconstitution: Lyophilized powder. Add distilled water for a 1 mg/mL concentration of GFPT2 antibody in PBS

Concentration: Lot specific

Buffer: PBS

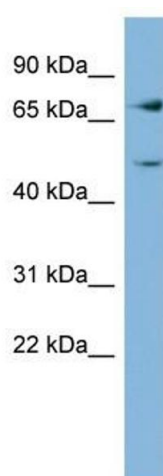
Handling Advice: Avoid repeated freeze/thaw cycles.  
Dilute only prior to immediate use.

Storage: 4 °C/-20 °C

Storage Comment: Store at 2-8 °C for short periods. For longer periods of storage, store at -20 °C.

## Images

---



### Western Blotting

**Image 1.** GFPT2 antibody used at 1 ug/ml to detect target protein.