

Datasheet for ABIN632239  
**anti-MAP4K1 antibody (N-Term)**



[Go to Product page](#)

1 Image

## Overview

|                      |                                       |
|----------------------|---------------------------------------|
| Quantity:            | 100 µL                                |
| Target:              | MAP4K1                                |
| Binding Specificity: | N-Term                                |
| Reactivity:          | Human, Rat                            |
| Host:                | Rabbit                                |
| Clonality:           | Polyclonal                            |
| Conjugate:           | This MAP4K1 antibody is un-conjugated |
| Application:         | Western Blotting (WB)                 |

## Product Details

|               |  |
|---------------|--|
| Immunogen:    | MAP4 K1 antibody was raised using the N terminal of MAP4 1 corresponding to a region with amino acids VHPLRVLFLMTKSGYQPRLKEKGKWSAAFHNFIKVTLTSPKKRPSATK |
| Specificity:  | MAP4 K1 antibody was raised against the N terminal of MAP4 1   |
| Purification: | Affinity purified  |

## Target Details

|                   |   |
|-------------------|---|
| Target:           | MAP4K1  |
| Alternative Name: | MAP4K1 ( <a href="#">MAP4K1 Products</a> )  |
| Background:       | MAP4K1 belongs to the protein kinase superfamily, STE Ser/Thr protein kinase family, STE20 subfamily. MAP4K1 may play a role in the response to environmental stress. It appears to act upstream of the JUN N-terminal pathway. MAP4K1 may play a role in hematopoietic lineage |

## Target Details

---

decisions and growth regulation.

Molecular Weight: 90 kDa (MW of target protein)

Pathways: [TCR Signaling](#), [Signaling of Hepatocyte Growth Factor Receptor](#)

## Application Details

---

Application Notes: WB: 1 µg/mL

Optimal conditions should be determined by the investigator.

Comment: MAP4K1 Blocking Peptide, catalog no. 33R-9582, is also available for use as a blocking control in assays to test for specificity of this MAP4K1 antibody

Restrictions: For Research Use only

## Handling

---

Format: Lyophilized

Reconstitution: Lyophilized powder. Add distilled water for a 1 mg/mL concentration of MAP0 1 antibody in PBS

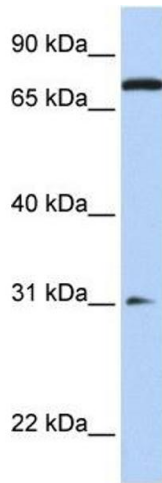
Concentration: Lot specific

Buffer: PBS

Handling Advice: Avoid repeated freeze/thaw cycles.  
Dilute only prior to immediate use.

Storage: 4 °C/-20 °C

Storage Comment: Store at 2-8 °C for short periods. For longer periods of storage, store at -20 °C.



### Western Blotting

**Image 1.** MAP4K1 antibody used at 1 ug/ml to detect target protein.