

Datasheet for ABIN632269
anti-CAB39 antibody (Middle Region)



[Go to Product page](#)

1 Image

Overview

Quantity:	100 µL
Target:	CAB39
Binding Specificity:	Middle Region
Reactivity:	Human, Mouse, Rat
Host:	Rabbit
Clonality:	Polyclonal
Conjugate:	This CAB39 antibody is un-conjugated
Application:	Western Blotting (WB)

Product Details

Immunogen:	CAB39 antibody was raised using the middle region of CAB39 corresponding to a region with amino acids KTQPILDILLKNQAKLIEFLSKFQNDRTEDQFNDEKTYLVKQIRDLKRP
Specificity:	CAB39 antibody was raised against the middle region of CAB39
Purification:	Affinity purified

Target Details

Target:	CAB39
Alternative Name:	CAB39 (CAB39 Products)
Background:	Together with the STE20-related adaptor-alpha (STRAD alpha) pseudo kinase, CAB39 forms a regulatory complex capable of stimulating the activity of STK11.

Target Details

Molecular Weight: 40 kDa (MW of target protein)

Pathways: [AMPK Signaling](#)

Application Details

Application Notes: WB: 1 µg/mL

Optimal conditions should be determined by the investigator.

Comment: CAB39 Blocking Peptide, catalog no. 33R-4688, is also available for use as a blocking control in assays to test for specificity of this CAB39 antibody

Restrictions: For Research Use only

Handling

Format: Lyophilized

Reconstitution: Lyophilized powder. Add distilled water for a 1 mg/mL concentration of CAB39 antibody in PBS

Concentration: Lot specific

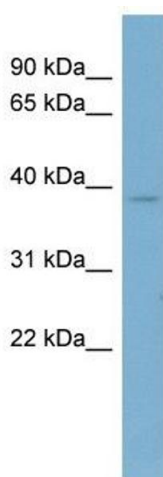
Buffer: PBS

Handling Advice: Avoid repeated freeze/thaw cycles.
Dilute only prior to immediate use.

Storage: 4 °C/-20 °C

Storage Comment: Store at 2-8 °C for short periods. For longer periods of storage, store at -20 °C.

Images



Western Blotting

Image 1. CAB39 antibody used at 1 µg/ml to detect target protein.