

Datasheet for ABIN632289  
**anti-SEC14L4 antibody**



[Go to Product page](#)

1 Image

## Overview

Quantity:	100 µL
Target:	SEC14L4
Reactivity:	Human, Mouse
Host:	Rabbit
Clonality:	Polyclonal
Conjugate:	This SEC14L4 antibody is un-conjugated
Application:	Western Blotting (WB)

## Product Details

Immunogen:	SEC14 L4 antibody was raised using a synthetic peptide corresponding to a region with amino acids MSSRVGDLSPQQEALARFRENLDLLPILPNADDYFLLRWLRARNFDLQ
Purification:	Affinity purified

## Target Details

Target:	SEC14L4
Alternative Name:	SEC14L4 ( <a href="#">SEC14L4 Products</a> )
Background:	SEC14L4 is a probable hydrophobic ligand-binding protein, may play a role in the transport of hydrophobic ligands like tocopherol, squalene and phospholipids.
Molecular Weight:	47 kDa (MW of target protein)

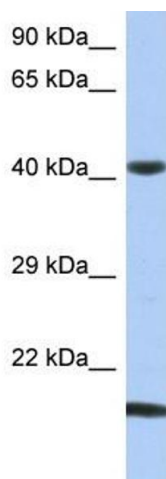
## Application Details

Application Notes:	WB: 1 µg/mL Optimal conditions should be determined by the investigator.
Comment:	SEC14L4 Blocking Peptide, catalog no. 33R-6510, is also available for use as a blocking control in assays to test for specificity of this SEC14L4 antibody
Restrictions:	For Research Use only

## Handling

Format:	Lyophilized
Reconstitution:	Lyophilized powder. Add distilled water for a 1 mg/mL concentration of SEC10 4 antibody in PBS
Concentration:	Lot specific
Buffer:	PBS
Handling Advice:	Avoid repeated freeze/thaw cycles.
Storage:	4 °C/-20 °C
Storage Comment:	Store at 2-8 °C for short periods. For longer periods of storage, store at -20 °C.

## Images



### Western Blotting

**Image 1.** SEC14L4 antibody used at 1 ug/ml to detect target protein.